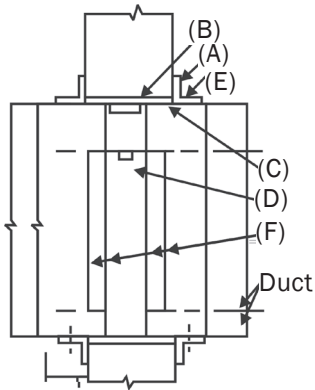


submittal

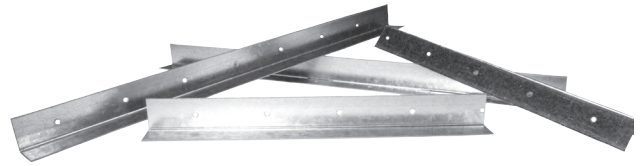
Job _____
 Location _____
 Submitted to _____
 Submittal Prepared by _____
 Approve Date _____
 Date _____

Typical installation details:

- (A) Retaining Angles:
Minimum 1½ x 1½ x 0.058 (16 Ga). Retaining angles must overlap structural opening 1" minimum and cover corners of openings
- (B) Clearance:
⅛" per linear foot both dimensions
- (C) Steel Sleeve:
- (D) Approved Fire Damper:
Curtain or Multi-Blade type.
- (E) Secure Retaining Angle to Sleeve only on 8" centers with:
 1. ½" long welds
 2. ¼" bolts and nuts
 3. No. 10 Screws
- (F) Secure Damper to Sleeve on 6" centers with:
 1. ½" long welds
 2. ¼" bolts and nuts
 3. No. 10 Steel Screws



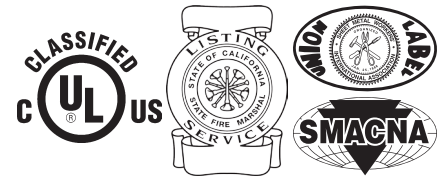
Retaining Angle



Retaining angles are 14 and 16 gauge, 1½" x 1½" galvanized steel, and are supplied in cut-to-length sets of 8 pieces for each damper size.

Pre-punched ⅜" holes for faster fastening of angle to sleeve.

SMACNA E Class rigidity (may be used for duct reinforcement).



This product meets the requirements for fire dampers established by:

NFPA Standard 90A
ICC Building Codes

Qty.	Damper Size		Damper Type		
	W	H	A	B	C

Part Number Format

R A S A 0 2 4 0 1 8 G

↑
RETAINING ANGLE SETS

↑
DAMPER WIDTH

↑
DAMPER HEIGHT

MATERIAL

G - GALVANIZED
S - STAINLESS STEEL

DAMPER TYPE

- A - TYPE A, BLADES IN AIRSTREAM
- B - TYPE B, BLADES OUT OF AIRSTREAM - "HI-HAT"
- C - TYPE C, ROUND COLLAR BLADES AND FRAME OUT OF AIRSTREAM
- O - TYPE C, OVAL COLLAR BLADES AND FRAME OUT OF AIRSTREAM
- R - TYPE C, RECTANGULAR COLLAR BLADES AND FRAME OUT OF AIRSTREAM

Submittal



AireTechnologies, Inc.
a DMI company

AireTechnologies, Inc.
1502 Industrial Drive
E. Monongahela, PA 15063

phone: 866.421.AIRE
fax 724.310.1262

www.airetechnologies.com