

Submittal

Job _____
 Location _____
 Submitted to _____
 Submittal Prepared by _____
 Approve Date _____
 Date _____

Series 50 With Boot

Series 50 CRD's are available with accompanying boots installed in 90° ("L"), straight, or end types and in flanged or non-flanged varieties.

UL Classified - For use in UL 263 wood truss floor/ceiling and roof/ceiling assemblies rated 1 hour

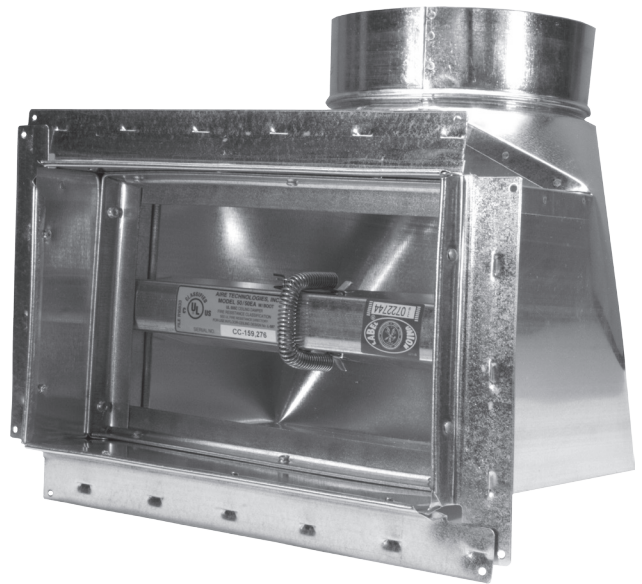
UL approved for use in **L-587** and **L-528** floor/ceiling as well as **P-556** and **P-533** roof/ceiling assemblies.

Incorporates UL 555C evaluated ceiling damper
 22 Ga CRD frame and blades, 28 Ga Boot

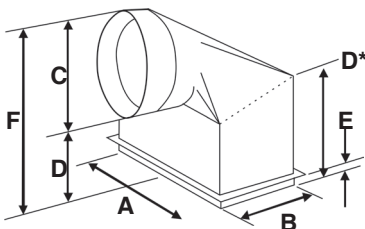
Standard fusible link - 165° F (optional 212° F)

Ceramic Thermal Blanket provided on units with CRD areas of greater than 84 sq. in.

Available in range of sizes from
 4" x 6" x 4" to 14" x 14" x 10"

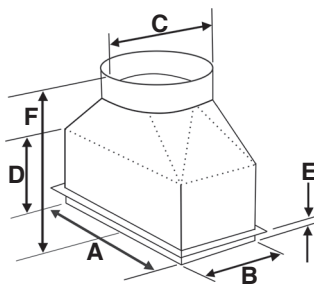


90° or "L" Boot



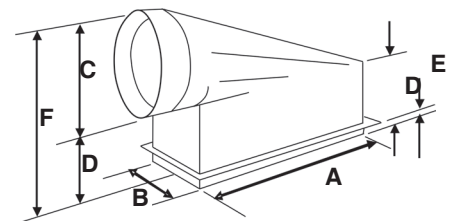
- A = Boot Width
- B = Boot Height
- C = Inlet Diameter
- D = Throat Depth
- D* = Back Height = Throat Depth + 2" ("L" Boots only)
- E = Flange (Plaster Guard) Recess (If Ordered)
- F = Overall Height

Straight Boot



- A = Boot Width
- B = Boot Height
- C = Inlet Diameter
- D = Throat Depth
- E = Flange (Plaster Guard) Recess (If Ordered)
- F = Overall Height (12" to 13½" depending on requested size)

End Boot



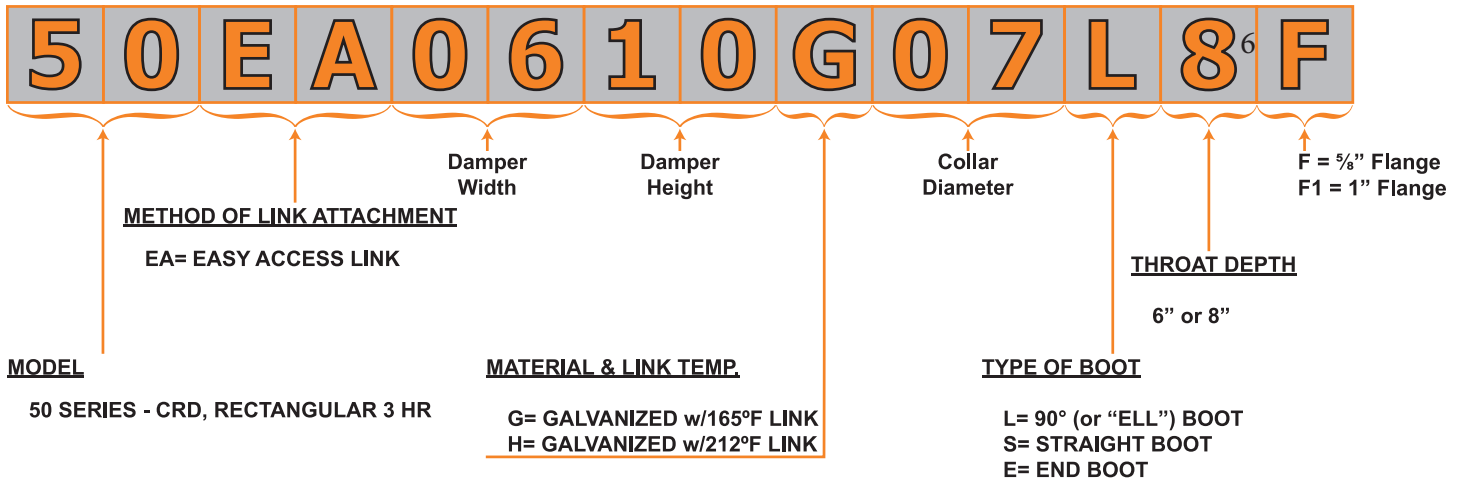
- A = Boot Width
- B = Boot Height
- C = Inlet Diameter
- D = Throat Depth
- E = Flange (Plaster Guard) Recess (If Ordered)
- F = Overall Height (varies w/size)



This product meets the requirements for ceiling dampers established by:
UL Standards 263 & 555C
NFPA Standard 90A
ICC Building Codes

Qty.	Damper Size		Fusible Link Temp (165°F) std.	Factory Boot Option					
	W	H		Type			Collar Size	Throat Depth	Flange
				L	S	E			

Part Number Format



Submittal