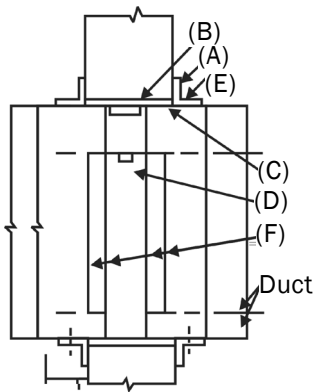


# submittal

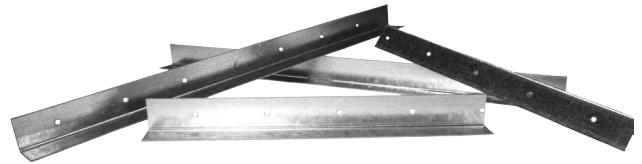
Job \_\_\_\_\_  
 Location \_\_\_\_\_  
 Submitted to \_\_\_\_\_  
 Submittal Prepared by \_\_\_\_\_  
 Approve Date \_\_\_\_\_  
 Date \_\_\_\_\_

Typical installation details:

- (A) Retaining Angles:  
Minimum 1½ x 1½ x 0.058 (16 Ga). Retaining angles must overlap structural opening 1" minimum and cover corners of openings
- (B) Clearance:  
⅛" per linear foot both dimensions
- (C) Steel Sleeve:
- (D) Approved Fire Damper:  
Curtain or Multi-Blade type.
- (E) Secure Retaining Angle to Sleeve only on 8" centers with:
  1. ½" long welds
  2. ¼" bolts and nuts
  3. No. 10 Screws
- (F) Secure Damper to Sleeve on 6" centers with:
  1. ½" long welds
  2. ¼" bolts and nuts
  3. No. 10 Steel Screws



## Retaining Angle



Retaining angles are 14 and 16 gauge, 1½" x 1½" galvanized steel, and are supplied in cut-to-length sets of 8 pieces for each damper size.

Pre-punched ⅜" holes for faster fastening of angle to sleeve.

SMACNA E Class rigidity (may be used for duct reinforcement).



This product meets the requirements for fire dampers established by:

**NFPA Standard 90A**  
**ICC Building Codes**

Qty.	Damper Size		Damper Type		
	W	H	A	B	C

## Part Number Format

**R A S A 0 2 4 0 1 8 G**

↑  
RETAINING ANGLE SETS

↑  
DAMPER WIDTH

↑  
DAMPER HEIGHT

**MATERIAL**

G - GALVANIZED  
S - STAINLESS STEEL

**DAMPER TYPE**

- A - TYPE A, BLADES IN AIRSTREAM
- B - TYPE B, BLADES OUT OF AIRSTREAM - "HI-HAT"
- C - TYPE C, ROUND COLLAR BLADES AND FRAME OUT OF AIRSTREAM
- O - TYPE C, OVAL COLLAR BLADES AND FRAME OUT OF AIRSTREAM
- R - TYPE C, RECTANGULAR COLLAR BLADES AND FRAME OUT OF AIRSTREAM

submittal



**AireTechnologies, Inc.**  
a DMI company

AireTechnologies, Inc.  
1502 Industrial Drive  
E. Monongahela, PA 15063

phone: 866.421.AIRE  
fax 724.310.1262

www.airetechnologies.com