



# **True Truss**<sup>TM</sup>



## ***Specifying Simplified!***

Knowing which life safety products are approved for multi-family wood truss construction can be confusing for everyone. Aire Technologies' True Truss aims to make that process easier. When you specify True Truss, you are ensured a quality product that carries the UL rating you need for your design and you get a UL263 product that is easily identifiable in the field!

***Just Look For The Label.***

# Introduction

**Aire Technologies, Inc.** is proud to present our line of air management and life safety products for integration into your HVAC system design, fabrication, or installation. You can expect from **Aire Technologies, Inc.**, the same unrivaled engineering, manufacturing quality, and delivery expertise, along with the commitment to excellence and value for which the **DMI** name has been known for more than 40 years.

**Aire Technologies, Inc.** products are a further extension of the **DMI** products that have been hallmarks for dependability, and provide the confidence you've come to expect.

Behind each product stands an engineering and technical support staff to ensure you have the right product to meet the requirements of your design or installation, and a sales, marketing, manufacturing, and shipping team to get you what you need, **when you need it.**

Additional product, ordering, and shipping information will be found in our product literature, spec data sheets, and on our website at **[airetechnologies.com](http://airetechnologies.com)**.



# Table of Contents

PRODUCT SUMMARY .....	1
<b>STATIC FIRE DAMPERS</b>	
Series 75 - 1½ Hour Rated - Standard Profile	
Type A, B, and C.....	3
Series 65 - 1½ Hour Rated - Thinline Profile	
Type A and B.....	4
Series 05 - 3 Hour Rated - Standard Profile	
Type A, B, and C.....	5
Series 95 - 3 Hour Rated - Thinline Profile	
Type A and B.....	6
<b>DYNAMIC FIRE DAMPERS</b>	
Series 77 - 1½ Hour Rated - Standard Profile	
Type A, B, and C.....	7
Series 99 - 3 Hour Rated - Standard Profile	
Type A, B, and C.....	8
Series 61 - 1½ Hour Rated - Thinline Profile	
Type A and B.....	9
<b>CEILING RADIATION DAMPERS</b>	
Series 51.....	11
Series 50.....	12
Series 55.....	13
Series 57.....	14
Series 58 Duct Drop .....	15
Series 58 Register Opening .....	16
Series 58 Duct Drop - Round Inlet.....	17
<b>COMBINATION FIRE &amp; SMOKE DAMPERS</b>	
Series 10 and 30.....	19
<b>SMOKE DAMPERS</b>	
Series 20.....	21
<b>AIR CONTROL DAMPERS</b>	
Series 80.....	23
<b>ACCESSORY ITEMS</b>	
Retaining Angles, Hemmed S, and Sleeves .....	24
Thermal Blankets and Fusible Links .....	25
Access Doors .....	26

# Product Summary

## FIRE DAMPERS

Fire Dampers are offered in two frame profiles: standard 4¼" and thinline 2".

Blades are of an interlocking, curtain style.

Fire Dampers are offered in three types:

**Type A** - in which the blades and frame are in the airstream

**Type B** - in which the blades are out of the airstream

**Type C** - in which the blades and frame are out of the airstream (100% Free Area)

Fire Dampers are offered in two mounting attitudes:

**Vertical** - mounted in horizontal duct run and where blade closure is via gravity

**Horizontal** - mounted in vertical duct run and where blade closure is spring facilitated

Fire dampers are UL 555 Classified and rated for 1½ hours or 3 hours. The dampers are activated via a heat responsive device known as a fusible link.

Fire dampers are offered for use in both static and dynamic systems

**Static systems** are those in which the system fans shut down during fire and smoke control.

**Dynamic systems** are those in which the system fans remain running during fire and smoke control.

In accordance with industry standard, fire dampers are undersized ¼".

Fire dampers are available in galvanized and stainless steel.

## CEILING RADIATION DAMPERS

Ceiling Radiation Dampers (CRDs) are offered in rectangular and round configurations. These are UL 555C classified for use in installations rated up to 3 hours. CRD blades are either a single blade style or a centrally hinged butterfly style.

Two options for link attachment are:

**Standard link**- a link mounted between the blades

**Easy Access link**- a link mounted between a hook and catch on the side of the blades

In accordance with industry standard, CRDs are undersized ¼".

CRDs are available in galvanized steel.

## WOOD TRUSS ASSEMBLIES

A combustible assembly is a form of construction comprised of a floor-ceiling or roof-ceiling as an assembly which, when fire tested as a unit, has been assigned a fire endurance rating expressed in hours.\* Series 50 with boot or box, Series 57, and Series 58 are approved for floor/ceiling UL L-587 and roof/ceiling P-556 designs. Further information about L-587 and P-556 can be found in the UL Fire Resistance Directory. These assemblies are comparable to L-521, L550, L562, L563, P-522, P-544, among others. Contact Aire Technologies for assistance in selecting the right ATI device for your application.

## LEAKAGE RATED DAMPERS

Aire Technologies offers a variety of leakage rated dampers including Combination Fire & Smoke Dampers, Smoke Dampers, and Air Control Dampers. Smoke Dampers and Combination Fire & Smoke Dampers are available in three leakage ratings: Class I (ultra low leakage), Class II (low leakage), or Class III (leakage). ATI Smoke Dampers are UL 555S rated. The Combination Fire & Smoke Dampers are UL 555 & 555S rated for 1½ hours or 3 hours at 250° or 350°. Combination Fire & Smoke Dampers are provided in factory installed sleeves. The actuator may be 2-position or modulating and may be mounted internally or externally.

## ACCESSORY ITEMS

A variety of items including sleeves, retaining angles, access doors replacement fusible links, and thermal blankets are offered for convenience in completion of the project's design and/or installation.

## CERTIFICATIONS AND APPROVALS

Aire Technologies Fire Dampers and Ceiling Radiation Dampers have been approved by the New York City Department of Buildings MEA Division and by the California State Fire Marshal.

ATI products that have been approved by UL for L-587 have also been approved by Applied Research Laboratories (ARL) for use in fire resistive assemblies of L-563 and P-544 designs.

PRODUCTS ARE APPROVED BY THE  
FOLLOWING AGENCIES:



PRODUCTS MANUFACTURED BY MEMBERS OF  
THE SMART SHEET METAL WORKERS UNION



\*Fire, Smoke, and Radiation Damper Installation Guide for HVAC Systems, SMACNA, 2002



# Product Survey

## Fire Dampers

1. Are these dampers to be installed in a system in which the fans continue to run during fire and smoke control?
  - Yes (Dynamic)
  - No (Static)
2. Are these dampers to be installed in ducts where they penetrate a:
  - Wall (Ductwork running horizontal)
  - Floor (Ductwork running vertical)
3. What is the fire rating of the partition? \_\_\_\_\_
4. Are there any dimensional restrictions in the partition that might impact the profile (thickness) of the damper's frame?
  - Yes
  - No
5. What are the duct dimensions? W \_\_\_\_\_ X H \_\_\_\_\_  
 Always indicate the width first even if shorter than the height. The width dimension will dictate the length of the blades.  
 \*The number of blades increases with damper height.
6. The damper's blades are to be:
  - In the air stream (Type A)
  - Out of the air stream (Type B)
7. The whole appliance, blades AND frame, are to be out of the air stream (100% free area):
  - Yes (Type C may have round, oval, or rectangular collars)
  - No
8. What fusible link temperature is required?
  - 165°
  - 212°
9. Are there any requirements for a product manufactured in stainless steel?
  - Yes
  - No
10. Will sleeves be factory or field installed?
  - Factory
  - Field
 If factory, what is the length of sleeve required?
  - 8"
  - 12"
  - 17"
  - 20"
11. Retaining angles to be supplied from:
  - Factory
  - Field

# Series 75

Static Fire Dampers - 1½ Hour Rated

## Profile

Standard Profile - 4¼" 22Ga 1 Piece Rollformed Frame

## Material

Galvanized Steel - Standard  
Stainless Steel - Optional

## Orientation

Available for Vertical or Horizontal Installations  
Type C Available with Round, Oval, or Rectangular Collars



## UL Classification

UL Classified UL 555 - 1½ Hour Rating, Static for Use in Installations Rated Less Than 3 Hours

## Fusible Link

165° Rated Link - Standard  
212° Rated Link - Optional

## 22Ga Optional Sleeves

12" Sleeve - Standard  
8", 17", 20", or 24" Lengths - Optional

## Type A



## Blades

Blades in Air-Stream

## Vertical Sizes

4" x 4" to 60" x 60"  
Multi-section  
up to 120" x 120"

## Horizontal Sizes

4" x 4" to 40" x 60"  
Multi-section  
up to 120" x 120"

## Type B



## Blades

Blades Out of Air-Stream

## Vertical Sizes

4" x 3" to 60" x 54"  
Multi-section  
up to 120" x 114"

## Horizontal Sizes

4" x 3" to 40" x 54"  
Multi-section  
up to 120" x 108"

## Type C



## Blades

Blades and Frame Out of Air-Stream 100% Free Area

## Vertical Sizes

4" to 53"  
Oval and Rectangular  
6" x 6" to 58" x 52"

## Horizontal Sizes

4" to 38"  
Oval and Rectangular  
6" x 6" to 38" x 52"

# Series 65

Thinline Static Fire Dampers - 1½ Hour Rated



## Profile

Thinline Profile - 2" 22Ga 1 Piece Rollformed Frame

## Material

Galvanized Steel - Standard  
Stainless Steel - Vertical Only Optional

## Orientation

Available for Vertical or Horizontal Installations

## UL Classification

UL Classified UL 555 - 1½ Hour Rating, Static for Use in Installations Rated Less Than 3 Hours

## Fusible Link

165° Rated Link - Standard  
212° Rated Link - Optional

## 22Ga Optional Sleeves

12" Sleeve - Standard  
8", 17", 20", or 24" Lengths - Optional

## Type A



## Blades

Blades in Air-Stream

## Vertical Sizes

4" x 4" to 48" x 49"

## Horizontal Sizes

4" x 4" to 36" x 36"

## Type B



## Blades

Blades Out of Air-Stream

## Vertical Sizes

4" x 3" to 48" x 41"

## Horizontal Sizes

4" x 3" to 36" x 30"



# Series 05

## Static Fire Dampers - 3 Hour Rated



### Profile

Standard Profile - 4¼" 22Ga 1 Piece Rollformed Frame

### Material

Galvanized Steel - Standard  
Stainless Steel - Optional

### Orientation

Available for Vertical or Horizontal Installations  
Type C Available with Round, Oval, or Rectangular Collars

### UL Classification

UL Classified UL 555 - 3 Hour Rating, Static for Use in Installations Rated Hours or Greater

### Fusible Link

165° Rated Link - Standard  
212° Rated Link - Optional

### 22Ga Optional Sleeves

12" Sleeve - Standard  
8", 17", 20", or 24" Lengths - Optional

## Type A



### Blades

Blades in Air-Stream

### Vertical Sizes

4" x 4" to 60" x 60"  
Multi-section  
up to 120" x 120"

### Horizontal Sizes

4" x 4" to 40" x 60"  
Multi-section  
120" x 60" or 80" x 96"

## Type B



### Blades

Blades Out of Air-Stream

### Vertical Sizes

4" x 3" to 60" x 54"  
Multi-section  
up to 120" x 114"

### Horizontal Sizes

4" x 3" to 40" x 54"  
Multi-section  
120" x 54" or 80" x 84"

## Type C



### Blades

Blades and Frame Out of Air-Stream 100% Free Area

### Vertical Sizes

4" to 53"  
Oval and Rectangular  
6" x 6" to 58" x 52"

### Horizontal Sizes

4" to 38"  
Oval and Rectangular  
6" x 6" to 38" x 52"

# Series 95

Thinline Static Fire Dampers - 3 Hour Rated



### Profile

Thinline Profile - 2" 22Ga 1 Piece Rollformed Frame

### Material

Galvanized Steel - Standard  
Stainless Steel - Optional

### Orientation

Available for Vertical Installations Only

### UL Classification

UL Classified UL 555 - 3 Hour Rating, Static for Use in Installations Rated 3 Hours or Greater

### Fusible Link

165° Rated Link - Standard  
212° Rated Link - Optional

### 22Ga Optional Sleeves

12" Sleeve - Standard  
8", 17", 20", or 24" Lengths - Optional

## Type A



### Blades

Blades in Air-Stream

### Vertical Sizes

4" x 4" to 48" x 49"

## Type B



### Blades

Blades Out of Air-Stream

### Vertical Sizes

4" x 3" to 48" x 41"

# Series 77

## Dynamic Fire Dampers - 1½ Hour Rated



### Profile

Standard Profile - 4¼" 22Ga 1 Piece Rollformed Frame  
Dynamic for Installation in Systems Where Fans Remain Running  
During Fire and Smoke Control

### Material

Galvanized Steel - Standard  
Stainless Steel - Optional

### Orientation

Available for Vertical or Horizontal Installations  
Type C Available with Round, Oval, or Rectangular Collars

### UL Classification

UL Classified UL 555 - 1½ Hour Rating, Dynamic for Use in  
Installations Rated Less Than 3 Hours

### Fusible Link

165° Rated Link - Standard  
212° Rated Link - Optional

### 22Ga Optional Sleeves

12" Sleeve - Standard  
8", 17", 20", or 24" Lengths - Optional

## Type A



### Blades

Blades in Air-Stream

### Vertical Sizes

4" x 4" to 36" x 36"

### Horizontal Sizes

4" x 4" to 24" x 24"

### Airflow Pressure Ratings

Vertical: 36" x 36" = 2,000 FPM at 4" W.G.  
Horizontal: 24" x 24" = 2,000 FPM at 4" W.G.  
Horizontal: 12" x 12" = 3,000 FPM at 4" W.G.

## Type B



### Blades

Blades Out of Air-Stream

### Vertical Sizes

4" x 3" to 36" x 32"

### Horizontal Sizes

4" x 3" to 24" x 21"

### Airflow Pressure Ratings

Vertical: 24" x 20" = 2,000 FPM at 4" W.G.  
Horizontal: 24" x 20" = 3,000 FPM at 4" W.G.  
Horizontal: 12" x 9" = 3,000 FPM at 4" W.G.

## Type C



### Blades

Blades and Frame Out of Air-Stream 100% Free Area

### Vertical Sizes

4" to 31"  
Oval and Rectangular  
6" x 6" to 34" x 31"

### Horizontal Sizes

4" to 20"  
Oval and Rectangular  
6" x 6" to 22" x 20"

# Series 99

Dynamic Fire Dampers - 3 Hour Rated



## Profile

Standard Profile - 4¼" 22Ga 1 Piece Rollformed Frame  
Dynamic for Installation in Systems Where Fans Remain Running  
During Fire and Smoke Control

## Material

Galvanized Steel - Standard  
Stainless Steel - Optional

## Orientation

Available for Vertical or Horizontal Installations  
Type C Available with Round, Oval, or Rectangular Collars

## UL Classification

UL Classified UL 555 - 3 Hour Rating, Dynamic for Use in  
Installations Rated 3 Hours or Greater

## Fusible Link

165° Rated Link - Standard  
212° Rated Link - Optional

## 22Ga Optional Sleeves

12" Sleeve - Standard  
8", 17", 20", or 24" Lengths - Optional

## Type A



### Blades

Blades in Air-Stream

### Vertical Sizes

4" x 4" to 36" x 36"

### Horizontal Sizes

4" x 4" to 24" x 24"

### Airflow Pressure Ratings

Vertical: 36" x 36" = 2,000 FPM at 4" W.G.  
Horizontal: 24" x 24" = 2,000 FPM at 4" W.G.  
Horizontal: 12" x 12" = 3,000 FPM at 4" W.G.

## Type B



### Blades

Blades Out of Air-Stream

### Vertical Sizes

4" x 4" to 36" x 32"

### Horizontal Sizes

4" x 4" to 24" x 21"

### Airflow Pressure Ratings

Vertical: 24" x 20" = 2,000 FPM at 4" W.G.  
Horizontal: 24" x 20" = 3,000 FPM at 4" W.G.  
Horizontal: 12" x 9" = 3,000 FPM at 4" W.G.

## Type C



### Blades

Blades and Frame Out of Air-Stream 100% Free Area

### Vertical Sizes

4" to 31"  
Oval and Rectangular  
6" x 6" to 34" x 31"

### Horizontal Sizes

4" to 20"  
Oval and Rectangular  
6" x 6" to 22" x 20"

# Series 61

Dynamic Thinline Fire Dampers - 1½ Hour Rated



## Profile

Thinline Profile - 2" 22Ga 1 Piece Rollformed Frame  
Dynamic for Installation in Systems Where Fans Remain Running  
During Fire and Smoke Control

## Material

Galvanized Steel - Standard  
Stainless Steel - Optional

## Orientation

Available for Vertical or Horizontal Installations

## UL Classification

UL Classified UL 555 - 1½ Hour Rating, Dynamic for Use in  
Installations Rated Less Than 3 Hours

## Fusible Link

165° Rated Link - Standard  
212° Rated Link - Optional

## 22Ga Optional Sleeves

12" Sleeve - Standard  
8", 17", 20", or 24" Lengths - Optional

## Type A



## Blades

Blades in Air-Stream

## Vertical Sizes

4" x 4" to 24" x 24"

## Horizontal Sizes

4" x 4" to 12" x 12"

## Airflow Pressure Ratings

Vertical: 24" x 24" = 2,000 FPM at 4" W.G.

Vertical: 12" x 12" = 3,000 FPM at 4" W.G.

Horizontal: 12" x 12" = 3,000 FPM at 4" W.G.

## Type B



## Blades

Blades Out of Air-Stream

## Vertical Sizes

4" x 4" to 24" x 20"

## Horizontal Sizes

4" x 4" to 4" x 9"

## Airflow Pressure Ratings

Vertical: 24" x 20" = 2,000 FPM at 4" W.G.

Vertical: 12" x 9" = 3,000 FPM at 4" W.G.

Horizontal: 12" x 9" = 3,000 FPM at 4" W.G.

# Product Survey

## Ceiling Radiation Dampers

### Information required for Ceiling Radiation Dampers

1. The dimensions of the duct opening are:
  - Rectangular
  - Round
2. It would be preferable to have the fusible link mounted:
  - Between the blades - SL
  - On the sides of the blades - EA  
(between a wire hook & catch)
3. What are the dimensions of the duct? W \_\_\_\_\_ X H \_\_\_\_\_  
*Always indicate the width first even if it is shorter than the height. The width dimension of a CRD will dictate the length of the blade and hinge.*
4. What temperature fusible link is required?
  - 165°
  - 212°
5. Are there any requirements for a product manufactured in stainless steel?
  - Yes
  - No
6. Are these products being installed in a UL Classified wood truss floor/ceiling or roof/ceiling assembly?
  - Yes
  - No

*Do you know the UL Classified number? This number will be specified by the architect.  
Ex. Aire Technologies L-587*
7. For UL 263, what is the floor-ceiling and/or roof-ceiling design number? \_\_\_\_\_
8. Does it need to be factory insulated?
  - Yes
  - No

*If no, please choose one of the following<sup>1</sup>:*

  - Series 50 with L Boot<sup>2</sup>
  - Series 50 with Straight Boot<sup>2</sup>
  - Series 50 with End Boot<sup>2</sup>
  - Series 50 with Metal Box (Model 50EAX)

*If yes, please choose one of the following:*

  - Series 57 – grille outlet
  - Series 58 – grille outlet or duct drop

*If Series 58 is chosen, would you like the ductboard factory supplied or field supplied?*

  - Factory
  - Field

<sup>1</sup>. For applications requiring increased airflow/efficiency a single blade "free-flow" CRD is available. CONSULT FACTORY FOR DETAILS ABOUT Series 51 CRD's INSTALLED IN BOOTS

<sup>2</sup>. Optional 8" throat available upon request.

# Series 51

Ceiling Radiation Dampers

#### Profile

22Ga 1 Piece Rollformed Frame and Blades

#### Material

Galvanized Steel



#### UL Classification

UL Classified UL 555C - For Use in Installations Rated Less Than 3 Hours

#### Fusible Link

165° Rated Link - Standard  
212° Rated Link - Optional

#### Fusible Link Type

Standard Link Attachment (SL) - Standard  
Easy Access Attachment (EA) - Optional

## Series 51SB



#### Vertical Sizes

6" x 4" to 24" x 12"

## Series 51SB In Boot



**True**  
**russ**  
UL 263 1 Hour

#### Sizes

6" x 4" x 4"Ø to 14" x 12" x 10"Ø

#### Enclosure Types

Flanged or Non-Flanged  
90° Boot

#### UL Design

UL 263 Approved for Use in  
L-587\*, L528, L558, L562, L563 L574, and L585 Floor/Ceiling  
P-556\*, P533, P544, P545, and P547 Roof/Ceiling

\*ATI Exclusive Listings

# Series 50

## Ceiling Radiation Dampers

### Profile

22Ga 1 Piece Rollformed Frame and Blades

### Material

Galvanized Steel



### UL Classification

UL Classified UL 555C - For Use in Installations Rated Less Than 3 Hours

### Fusible Link

165° Rated Link - Standard  
212° Rated Link - Optional

### Fusible Link Type

Standard Link Attachment (SL) - Standard  
Easy Access Attachment (EA) - Optional

## Series 50



### Sizes

Available in Single-Section Sizes From  
4" x 6" or 6" x 4" to 24" x 24"

### Insulation

Ceramic Thermal Blanket Provide on Units with Area Greater Than 84  
Square Inches

## Series 50 With Boot



**True  
russ**  
UL 263 1 Hour

### Sizes

4" x 6" x 4"0 to 14" x 14" x 10"0

### Enclosure Types

Flanged or Non-Flanged  
90° Boot  
Straight Boot  
End Boot

### UL Design

UL 263 Approved for Use in  
L-587\*, L528, L558, L562, L563 L574, and L585 Floor/Ceiling  
P-556\*, P533, P544, P545, and P547 Roof/Ceiling

## Series 50 With Box



**True  
russ**  
UL 263 1 Hour

### Sizes

4" x 8" to 14" x 14"

### Enclosure Types

Flanged or Non-Flanged  
Box

### UL Design

UL 263 Approved for Use in  
L-587\*, L-528, and L-562 Floor/Ceiling  
P-556\* and P-533 Roof/Ceiling

\*ATI Exclusive Listings



# Series 55

## Ceiling Radiation Dampers

### Profile

22Ga 1 Piece Rollformed Frame and Blades

### Material

Galvanized Steel



### UL Classification

UL Classified UL 555C - For Use in Installations Rated Less Than 3 Hours

### Fusible Link

165° Rated Link - Standard  
212° Rated Link - Optional

### Fusible Link Type

Standard Link Attachment (SL) - Standard  
Easy Access Attachment (EA) - Optional

## Series 55SL



### Sizes

Available in Single-Section Sizes From  
4"Ø to 24"Ø

### Insulation

Ceramic Thermal Blanket Provide on Units with Area Greater Than 84  
Square Inches

## Series 55EA



### Sizes

Available in Single-Section Sizes From  
5"Ø to 24"Ø

### Insulation

Ceramic Thermal Blanket Provide on Units with Area Greater Than 84  
Square Inches

# Series 57

## Ceiling Radiation Damper

### Profile

22Ga 1 Piece Rollformed Frame and Blades

### Material

Galvanized Steel



### UL Classification

UL Classified UL 263 - For Use in Wood Truss Floor/Ceiling Assemblies Rated 1 Hour or Less

### Fusible Link

165° Rated Link - Standard  
212° Rated Link - Optional

### Fusible Link Type

Standard Link Attachment (SL)  
Available on 4" Diameter  
Easy Access Attachment (EA)  
Available on 5" Diameter and Up

## Series 57IB



### Sizes

Available in a Range of Sizes From  
4" x 8" x 4"0 to 16" x 16" x 12"0

### Enclosure Types

28Ga Box and Collar Available with 1½" R-6 or 2" R-8 Duct Liner Insulation

### Insulation

Ceramic Thermal Blanket Provide on Units with Area Greater Than 84 Square Inches

### UL Design

UL 263 Approved for Use in  
L-587\*, L528, L558, L562, L563 L574, and L585 Floor/Ceiling  
P-556\*, P533, P544, P545, and P547 Roof/Ceiling

### Exclusive Feature

Approval for Class 0 and 1 Flex-Duct OR Steel Pipe Elbow Connections to Achieve Top-Out or Side-Out Configurations

**ONLY UL Tested and Approved Manufacture Offering This Option**

# Series 58

Ceiling Radiation Dampers For Duct Opening



## Profile

22Ga 1 Piece Rollformed Frame and Blades

## Material

Galvanized Steel

## UL Classification

UL Classified UL 263 - For Use in Wood Truss Floor/Ceiling Assemblies Rated 1 Hour or Less

## Fusible Link

165° Rated Link - Standard  
212° Rated Link - Optional

## Series 58DD



## Sizes

Available in a Range of Sizes From  
4" x 8" x 14"h to 20" x 16" x 16"h

## Enclosure Types

Incorporates Series 50 UL 555C Evaluated Ceiling Damper  
1½" R-6 and R-8 Ductboard Box - **Factory Installed Included**

## Insulation

Ceramic Thermal Blanket Provide on Units with Area Greater Than 84  
Square Inches

## UL Design

UL 263 Approved for Use in  
L-587\*, L528, L558, L562, L563 L574, and L585 Floor/Ceiling  
P-556\*, P533, P544, P545, and P547 Roof/Ceiling

## Series 58EAD



## Sizes

Available in a Range of Sizes From  
4" x 8" x 14"h to 20" x 16" x 16"h

## Enclosure Types

Incorporates Series 50 UL 555C Evaluated Ceiling Damper  
1½" R-6 and R-8 Ductboard Box - **Field Installed Not Included**

## Insulation

Ceramic Thermal Blanket Provide on Units with Area Greater Than 84  
Square Inches

## UL Design

UL 263 Approved for Use in  
L-587\*, L528, L558, L562, L563 L574, and L585 Floor/Ceiling  
P-556\*, P533, P544, P545, and P547 Roof/Ceiling

# Series 58

Ceiling Radiation Dampers For Register Connections



## Profile

22Ga 1 Piece Rollformed Frame and Blades

## Material

Galvanized Steel

## UL Classification

UL Classified UL 263 - For Use in Wood Truss Floor/Ceiling Assemblies Rated 1 Hour or Less

## Fusible Link

165° Rated Link - Standard  
212° Rated Link - Optional

## Series 58DR



## Sizes

Available in a Range of Sizes From  
4" x 8" x 14"h to 20" x 16" x 16"h

## Enclosure Types

Incorporates Series 50 UL 555C Evaluated Ceiling Damper  
1½" R-6 and R-8 Ductboard Box - **Factory Installed Included**

## Insulation

Ceramic Thermal Blanket Provide on Units with Area Greater Than 84  
Square Inches

## UL Design

UL 263 Approved for Use in  
L-587\*, L528, L558, L562, L563 L574, and L585 Floor/Ceiling  
P-556\*, P533, P544, P545, and P547 Roof/Ceiling

## Series 58EAR



## Sizes

Available in a Range of Sizes From  
4" x 8" x 14"h to 20" x 16" x 16"h

## Enclosure Types

Incorporates Series 50 UL 555C Evaluated Ceiling Damper  
1½" R-6 and R-8 Ductboard Box - **Field Installed Not Included**

## Insulation

Ceramic Thermal Blanket Provide on Units with Area Greater Than 84  
Square Inches

## UL Design

UL 263 Approved for Use in  
L-587\*, L528, L558, L562, L563 L574, and L585 Floor/Ceiling  
P-556\*, P533, P544, P545, and P547 Roof/Ceiling

\*ATI Exclusive Listings

# Series 58

Ceiling Radiation Dampers For Round Inlet

## Profile

22Ga 1 Piece Rollformed Frame and Blades

## Material

Galvanized Steel



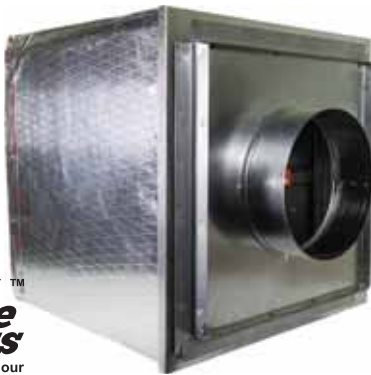
## UL Classification

UL Classified UL 263 - For Use in Wood Truss Floor/Ceiling Assemblies Rated 1 Hour or Less

## Fusible Link

165° Rated Link - Standard  
212° Rated Link - Optional

## Series 58DC



## Sizes

Available in a Range of Sizes From  
6" Diameter to 14" Diameter

## Enclosure Types

Incorporates Series 50 UL 555C Evaluated Ceiling Damper  
1½" R-6 and R-8 Ductboard Box - **Factory Installed Included**

## Insulation

Ceramic Thermal Blanket Provide on Units with Area Greater Than 84  
Square Inches

## UL Design

UL 263 Approved for Use in  
L-587\*, L528, L558, L562, L563 L574, and L585 Floor/Ceiling  
P-556\*, P533, P544, P545, and P547 Roof/Ceiling

## Series 58EAC



## Sizes

Available in a Range of Sizes From  
6" Diameter to 14" Diameter

## Enclosure Types

Incorporates Series 50 UL 555C Evaluated Ceiling Damper  
1½" R-6 and R-8 Ductboard Box - **Field Installed Not Included**

## Insulation

Ceramic Thermal Blanket Provide on Units with Area Greater Than 84  
Square Inches

## UL Design

UL 263 Approved for Use in  
L-587\*, L528, L558, L562, L563 L574, and L585 Floor/Ceiling  
P-556\*, P533, P544, P545, and P547 Roof/Ceiling

# Product Survey

## Combination Fire And Smoke Dampers

Information required for Combination Fire & Smoke dampers:

1. What leakage class is required?
  - Class I Ultra-Low Leakage
  - Class II Low Leakage
2. What is the rating of the partition?
  - 1½ Hours
  - 3 Hours
3. What temperature rating do you require?
  - 250°F
  - 350°F
4. What are the duct dimensions? W \_\_\_\_\_ X H \_\_\_\_\_  
 Always indicate the width first even if shorter than the height. The width dimension will dictate the length of the blades.
5. Does the damper require a transition?
  - Round
  - Oval
  - Rectangular
  - None
6. Will the damper also be used as a volume control damper?
  - Yes (Modulating Actuator)
  - No (2 Position Actuator)
7. What voltage actuator is required?
  - 24 Volt
  - 120 Volt
  - 220 Volt
8. Where is the actuator to be mounted?
  - External (Outside damper; out of the airstream)
  - Internal (Inside damper; in the airstream)
    - Grille access required
9. Do you require an end switch?
  - Yes
  - No
10. What sleeve length is required?
  - 17"
  - 20"
  - 24"
11. At what temperature does the damper need to close?
  - 165°F
  - 212°F
12. Is a specific actuator brand required?
  - Yes, Siemens
  - Yes, Belimo
  - No

# Combination

Fire And Smoke Dampers



**Leakage Classes**

Class 1 - Ultra-Low  
Class 2 - Low

**Material**

Galvanized Steel

**Orientation**

Available for Vertical or Horizontal Installations

**UL Classification And Standards**

UL Classified UL 555 and 555S  
NFPA Standard 90A ICC Building Codes

**Temperature Ratings**

250° Rated - Standard  
350° Rated - Optional

**22Ga Optional Sleeves**

17" Sleeve - Standard  
17", 20", or 24" Lengths - Optional

## Series 10



**UL Rating**

UL 555 and 555S - 1½ Hour Rating, for Use in Installations Rated Less Than 3 Hours

**Sizes**

Available in Single-Section Sizes up to 36" x 36"

**Blades**

16Ga Galvanized 3 "V" Formed for Rigidity  
Parallel Operation  
Double Yoke Kneelock for Increased Stability

**Airflow Pressure Ratings**

Vertical and Horizontal = 2,000 FPM at 4" W.G. Maximum

**Options**

Transitions: Rectangle, Round, Oval, or Special  
Actuator Type: Electrical  
Actuator Location: External or Internal

## Series 30



**UL Rating**

UL 555 and 555S - 3 Hour Rating, for Use in Installations Rated 3 Hours or Greater

**Sizes**

Available in Single-Section Sizes up to 36" x 36"

**Blades**

16Ga Galvanized 3 "V" Formed for Rigidity  
Parallel Operation  
Double Yoke Kneelock for Increased Stability

**Airflow Pressure Ratings**

Vertical and Horizontal = 2,000 FPM at 4" W.G. Maximum

**Options**

Transitions: Rectangle, Round, Oval, or Special  
Actuator Type: Electrical  
Actuator Location: External or Internal

# Product Survey

## Smoke Dampers

Information required for Smoke dampers:

1. What leakage class is required?
  - Class I Ultra-Low Leakage
  - Class II Low Leakage
2. What temperature rating do you require?
  - 250°F
  - 350°F
3. What are the dimensions of the damper? W\_\_\_\_\_ X H\_\_\_\_\_  
*Always indicate the width first even if shorter than the height. The width dimension will dictate the length of the blades.*
4. Does the damper require a transition?
  - Round
  - Oval
  - Rectangular
  - None
5. Will the damper also be used as a volume control damper?
  - Yes (Modulating Actuator)
  - No (2 Position Actuator)
6. What voltage actuator is required?
  - 24 Volt
  - 120 Volt
  - 220 Volt
7. Where is the actuator to be mounted?
  - External (Outside damper; out of the airstream)
  - Internal (Inside damper; in the airstream)
8. Do you require an end switch?
  - Yes
  - No
9. Is a specific actuator brand required?
  - Yes, Siemens
  - Yes, Belimo
  - No



# Series 20

Smoke Damper

## Leakage Classes

Class 1 - Ultra-Low  
Class 2 - Low

## Material

Galvanized Steel

## Orientation

Available for Vertical or Horizontal Installations

## Series 20



## UL Classification And Standards

UL Classified UL 555S  
NFPA Standard 90A ICC Building Codes

## Temperature Ratings

250° Rated - Standard  
350° Rated - Optional

## 22Ga Optional Sleeves

17" Sleeve - Standard  
17", 20", or 24" Lengths - Optional

## UL Rating

UL 555 and 555S - 1½ Hour Rating, for Use in Installations Rated Less Than 3 Hours

## Sizes

Available in Single-Section Sizes up to 36" x 36"  
Available in Multi-Section Sized up to 288" x 36"

## Airflow Pressure Ratings

Vertical and Horizontal = 2,000 FPM at 4" W.G. Maximum

# Product Survey

## Air Control Dampers

### Information required for Air Control Dampers

1. Do you require a low leakage damper?
  - Yes
  - No
2. What are the dimensions of the damper? W\_\_\_\_\_ X H\_\_\_\_\_  
*Always indicate the width first even if shorter than the height. The width dimension will dictate the length of the blades.*
3. What type of blade assembly is required?
  - Opposed Blade
  - Parallel Blade
4. Bearing material?
  - Non-metallic Celcon® (Standard)
  - Bronze
5. What size shaft extension is required?
  - 3"
  - 6"
  - 11"
6. What voltage actuator is required?
  - None, Manual
  - 24v
  - 120v
  - 240v
7. Do you require an End Switch?
  - Yes
  - No
8. 2 position or Modulating Actuator?
  - 2 Position
  - Modulating

# Series 80

Air Control Damper

**Material**

Mill Galvanized Steel

**Orientation**

Available for Vertical or Horizontal Installations

**22Ga Optional Sleeves**

12" Sleeve - Standard

8", 17", 20", or 24" Lengths - Optional

## Series 80



**Frame**

16Ga Galvanized Steel 5" x 1" Channel Construction with Die-Formed Corner Gussets

**Blades**

16Ga Galvanized 3" V" Formed for Rigidity  
Parallel or Opposed Closer Action

**Bearings**

Sintered Bronze Oil Impregnated or Non-Metallic Celcon® Acetal Plastic

**Axles**

½" Square Zinc Plated Steel

**Linkage**

Zinc Plated Steel Concealed in the Channel Frame

**Actuator**

Shipped Loose and Field Installed\*

**Sizes**

Available in Single-Section Sizes From  
8" x 8" to 60" x 60"

**Optional Components**

Extended Shafts - 3" (Series 80), 6" (Series 81), or 11" (Series 82)

*\* Consult Aire Technologies for Factory Installed Actuator*

# Accessories

## Retaining Angle



### Description

Retaining angles are 16 gauge, 1½" x 1½" galvanized steel, and are supplied in cut-to-length sets for each damper size.

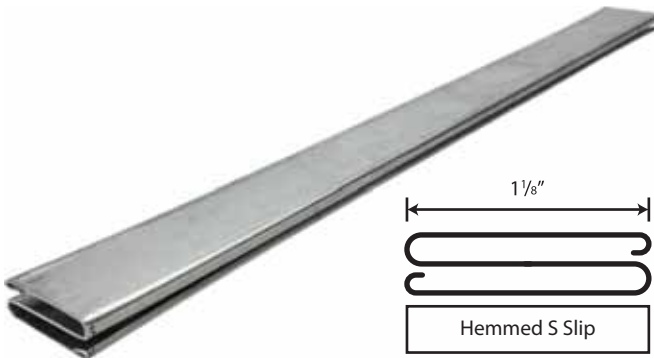
### Number of Pieces

Double Sided Retaining Angle - 8 Pieces Cut to Length  
Single Sided Retaining Angle - 4 Pieces Cut to Length

### Standards

Meets ASHRAE, UMC, and SMACNA E Class Rigidity (May Be Used For Duct Reinforcement)

## Hemmed S



### Description

For use in Series 50 w/boot, Series 50 w/box, Series 51 w/boot, Series 57, and Series 58 installations. Please reference installation instructions or videos for more information.

### Standard Lengths

28 Ga 26"  
28 Ga 120"

## Sleeves



### Standard Length

22 Ga 12"

### Optional Lengths

22 Ga 4"  
22 Ga 8"  
22 Ga 17"  
22 Ga 20"  
22 Ga 24"

# Accessories

## Thermal Blankets



### Description

Ceramic Fiber Thermal Blanket (commonly used on CRD's of area greater than 84 SI) is available in 24"x24" and 28"x28" pieces, with or without fiber mesh scrim.

## Fusible Links



### Description

Fusible Links are supplied in long, short, or no hook according to the respective damper application and are available in 165°F (100°F ambient) and 212°F (150°F ambient) temperatures in packages of 10 pieces or cartons of 100 pieces.

### Type A Dampers

Short Hook

### Type B Dampers

Long Hook

### Type C Dampers

Short Hook

### Ceiling Radiation Dampers

No Hook

### Special Characteristics

- Maximum Load = 10 lbs. (4.5 kg.)
- Minimum Load = 3 lbs. (1.36 kg.)
- Corrosion Resistant Construction
- Brass Components
- Solid Eye-to-Eye Connection



# Access Doors

High Pressure Sandwich® And Low Pressure Square Framed

## Sandwich



### Door Styles

Rectangular  
Hi-Temp  
Clean-Out  
Circular Clean-Out  
Round Duct  
Observation

### Special Characteristics

- Advanced Pressure Vessel Design
- Insulated, Uninsulated, and Specialty Metals
- No Measuring (Self-Adhesive Template Provided)
- Effortless Opening and Closing (No Tools Required)
- Shape Provides a More Effective Access Area
- No Frame to Install

## Square Frame



### Door Styles

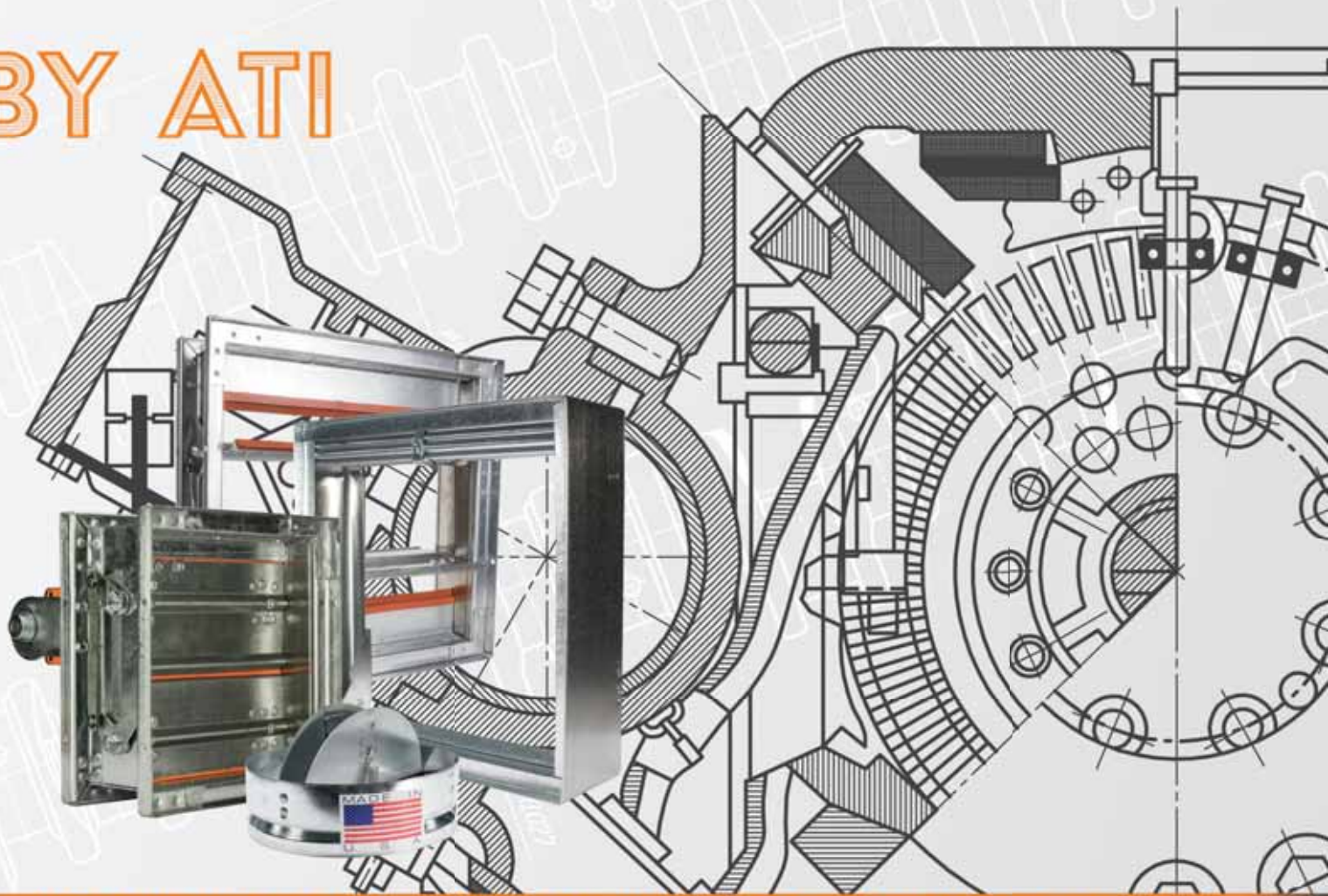
Hinge and Cam  
Cam Latches  
High Pressure

### Special Characteristics

- Double gasketed
- Insulated
- Competitively priced
- Precision designed and manufactured
- Variety of sizes available
- Available in Specialty Metals

# DESIGNED ENGINEERED & BUILT

## BY ATI



Fire Dampers | Leakage Rated Dampers | CRDs | True Truss™ Enclosures

At Aire Technologies we know you take pride in the work you do. That is why we take pride in providing the highest quality products and service in the HVAC Industry. All our fire life safety devices are designed and engineered to exceed industry standards for performance and come backed by our unsurpassed level of technical support. We deliver the right product for the right design application right on time, every time.

Aire Technologies, your source for engineered HVAC fire life safety solutions.



**AireTechnologies, Inc**  
AIR COMPANY

**AireTechnologies.com**

**210 5th Street, Charleroi PA, 15022**

**P: 1.866.421.AIRE | F: 724.310.1262**