



Providing Solutions To The HVAC Industry



# Introduction

**Aire Technologies** is proud to present our line of air management and life safety products for integration into your HVAC system design, fabrication, or installation. You can expect from **Aire Technologies**, the same unrivaled engineering, manufacturing quality, and delivery expertise, along with the commitment to excellence and value for which the **DMI** name has been known for more than 40 years.

Some of the largest HVAC contractors select **Aire Technologies** as their partner for HVAC air management and life safety devices. This is because they respect the partnership and the added value Aire Tech brings to their business! **Aire Technologies** goes the extra mile to deliver more than quality products; they deliver peace of mind and a commitment to excellence.

Behind each product stands an engineering and technical support staff to ensure you have the right product to meet the requirements of your design or installation, and a sales, marketing, manufacturing, and shipping team to get you what you need, **when you need it**.

# Product Summary

## HURRICANE AND AMCA RATED LOUVERS

Aire Technologies offers a variety of extruded aluminum louvers and AGVs to provide fresh air intake or exhaust. The louvers are rated and licensed by AMCA and Miami-Dade County. The products are designed to meet the performance criteria specified by engineers and architects. A number of styles and configurations are available including stationary drainable and non-drainable blades, combination louver/dampers, gravity/backdraft style blades, aluminum gravity ventilators, flanges, and sleeves.

## CERTIFICATIONS AND APPROVALS

Aire Technologies certifies the louvers shown here are licensed to bear the AMCA seal. The ratings shown are based on tests and procedures performed in accordance with AMCA Publication 511 and complies with the requirements of the AMCA.

### PRODUCTS ARE APPROVED BY THE FOLLOWING AGENCIES:



### PRODUCTS MANUFACTURED BY MEMBERS OF THE SMART SHEET METAL WORKERS UNION



**Standard Construction:**  
Stationary and Combination Louvers

**Material**  
Mill Finish 6063-T5 Aluminum

**Profile**  
Channel Frame

**Screen**  
Birdscreen

**Note**  
All Louvers are built 1/4" under size both directions unless ordered actual size

## Stationary Louvers

Extruded Aluminum Louvers

**Performance Features:** Published performance ratings based on testing in accordance with AMCA Standard 500-L



### Model 245-SD

**Frame And Blades:**

Frame: Heavy gauge 2" deep  
.081" thick  
Blade: 45° drainable  
.081" thick  
Spaced 3" apart

**Single-Section Sizes:**

Minimum: 6"W x 6"H  
Maximum: 60"W x 96"H  
or 96"W x 60"H



### Model 445-SW

**Frame And Blades:**

Frame: Heavy gauge 4" deep  
.081" thick  
Blade: 45° non-drainable  
Weather control  
.081" thick  
spaced 4" apart

**Single-Section Sizes\*:**

Minimum: 12"W x 12"H  
Maximum: 84"W x 120"H  
or 120"W x 84"H

\* Multi-Sections Available



### Model 436-SD

**Frame And Blades:**

Frame: Heavy gauge 4"  
.081" thick  
Blade: 36° drainable  
.081" thick  
Spaced 3.25" apart

**Single-Section Sizes\*:**

Minimum: 12"W x 12"H  
Maximum: 84"W x 120"H  
or 120"W x 84"H

\* Multi-Sections Available



### Model 438-SD

**Frame And Blades:**

Frame: Heavy gauge 4" deep  
.081" thick  
Blade: 38° drainable  
.081" thick  
Spaced 3.5" apart

**Single-Section Sizes\*:**

Minimum: 12"W x 12"H  
Maximum: 84"W x 120"H  
or 120"W x 84"H

\* Multi-Sections Available



### Model 638-SD

**Frame And Blades:**

Frame: Heavy gauge 6" deep  
.081" thick  
Blade: 38° drainable  
.081" thick  
Spaced 4.75" apart

**Single-Section Sizes\*:**

Minimum: 12"W x 12"H  
Maximum: 84"W x 120"H  
or 120"W x 84"H

\* Multi-Sections Available

## Combination Louver/Dampers

Extruded Aluminum Louvers

**Performance Features:** Published performance ratings based on testing in accordance with AMCA Standard 500-L



### Model 445-CW

**Frame And Blades:**

Frame: Heavy gauge 4" deep  
.081" thick  
Blade: 45° non-drainable  
Weather control  
.081" thick  
Spaced 4" apart

**Single-Section Sizes\*:**

Minimum: 12"W x 12"H  
Maximum: 72"W x 120"H

\* Multi-Sections Available



### Model 638-CD

**Frame And Blades:**

Frame: Heavy gauge 6" deep  
.081" thick  
Blade: 38° drainable  
.081" thick  
Spaced 4.75" apart

**Single-Section Sizes\*:**

Minimum: 12"W x 12"H  
Maximum: 72"W x 120"H

\* Multi-Sections Available



### Model 438-CD

**Frame And Blades:**

Frame: Heavy gauge 4"  
.081" thick  
Blade: 38° drainable  
.081" thick  
Spaced 3.5" apart

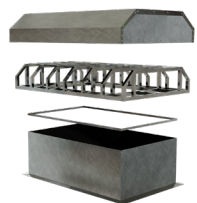
**Single-Section Sizes\*:**

Minimum: 12"W x 12"H  
Maximum: 72"W x 120"H

\* Multi-Sections Available

## Ventilators

Aluminum Gravity Ventilators



### Model DC-AGV

**Design Load Pressure:**

120 psf achieved with a shell size of 96"W x 144" L utilizing a 42" roof curb

**Wind Load Performance:**

+/- 120 psf at 96"W x 144" L  
+/- 180 psf at 48"W x 48" L  
Air performance data sheets are available

**Standard Construction:**

Shell: .081" Thick Aluminum  
Curb Skirt: 2" x 3" x .188"  
Interior Subframe: Aluminum Angle  
Bird Screen: Expanded Aluminum  
Finish: Standard Mill Finish

**Sizes:**

Max Shell: 96" W x 144" L  
Min Shell: 24" W x 24" L

**Options:**

Hinged Assembly  
Filter Racks  
Insect Screen  
Anti-condensate Coating  
Powder Coating



### Model AGV

**Sizes:**

Max Shell: 96" W x 144" L  
Min Shell: 18" W x 18" L

**Standard Construction:**

Shell: .081" Thick Aluminum  
Curb Skirt: 2" x 3" x .188" Aluminum Angle  
Bird Screen: Expanded Aluminum  
Finish: Standard Mill Finish

**Options:**

Hinged Assembly  
Filter Racks  
Insect Screen  
Anti-condensate Coating  
Powder Coating

**Meets the Following Test Protocols:**

TAS 201-94 (Missile Impact Test)  
TAS 202-94 (Uniform Static Air Pressure Test)  
TAS 203-94 (Cyclic Wind Pressure Loading Test)

**Standard Construction:**

Severe Duty Louvers

**Material**

Mill Finish 6063-T5 Aluminum

**Profile**

Channel Frame

**Screen**

Birdscreen

**Note**

All Miami-Dade County Louvers are built 1/2" under sized both directions unless ordered actual size

## Severe Duty Louvers

Extruded Aluminum Louvers

**Model DC-436**

Hurricane Louver

**Performance Features:**

Published performance ratings based on testing in accordance with Miami-Dade County Large Missile Impact Test, Uniform Static Air Pressure Test, Cycle Wind Loading Test and AMCA Standard 500-L.

**Model DC-638**

Hurricane Louver

**Performance Features:**

Published performance ratings based on testing in accordance with Miami-Dade County Large Missile Impact Test, Uniform Static Air Pressure Test, Cycle Wind Loading Test and AMCA Standard 500-L.

**Model WDV-6**

Wind-Driven Rain Louver

**Performance Features:**

Published performance ratings based on testing in accordance with AMCA Standards 500-L and AMCA 550.

**Frame And Blades:**

Frame: Heavy gauge 4" deep x .081" thick  
 Blade: 36° drainable  
 .081" thick  
 Spaced 3.25" apart  
 Mechanically fastened and welded to jambs on backside of blade  
 Bird Screen: Expanded metal  
 Anchor Clips: 2" x 2" x 3/16" x 2" long if not sleeved  
 2" x 2" x 3/16" continuous angle if sleeved

**Frame And Blades:**

Frame: Heavy gauge 6" deep x .081" thick  
 Blade: 38° drainable  
 .081" thick  
 Spaced 4.75" apart mechanically fastened and welded to jambs on backside of blade  
 Bird Screen: Expanded metal  
 Anchor Clips: 2" x 2" x 3/16" x 2" long if not sleeved  
 2" x 2" x 3/16" continuous angle if sleeved

**Frame And Blades:**

Frame: Heavy Gauge 6" deep x .081" thick  
 Blade: Vertical rain resistant style  
 .080 nominal wall thickness

**Sizes:**

Minimum: 120"W x 120"H Single-Section  
 Area Not to Exceed 40 sq. ft.

**Single-Section Sizes\*:**

Minimum: 12"W x 12"H  
 Maximum: 84"W x 120"H or 120"W x 84"H

**Single-Section Sizes\*:**

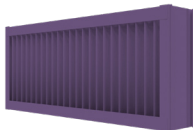
Minimum: 12"W x 12"H  
 Maximum: 84"W x 120"H or 120"W x 84"H

\* Multi-Sections Available

\* Multi-Sections Available

## Severe Duty Impact Resistant Louvers

Extruded Aluminum Louvers

**Model WVSD-6**

Wind-Driven Rain Louver

**Performance Features:**Free Area: 46%, 7.36 ft<sup>2</sup>  
(48"x48")

Published performance ratings based on testing in accordance with AMCA Standards 500-L, AMCA 550, and AMCA 540

**Standard Construction:**

Material: 063-T5 extruded aluminum  
 Frame: Heavy Gauge 6" deep x .081" thick  
 Blade: Vertical rain-resistant style  
 .080 nominal wall thickness

**Sizes:**

Max Single Section Width: 48"  
 Max Single Section Height: 62"  
 Max Multi-Section Width: 96"  
 Max Multi-Section Height: 62"

**Frame Styles:**

Standard: Flush Box – No Flange  
 Optional: Bottom Flange Only  
 or Full Perimeter 1.5" Flange

**Options:**

Insect Screen  
 Mounting Sleeves: 8", 10", 12", 14", or 16"

# Product Survey

Hurricane and AMCA Rated Louvers

## Information required for Louvers:

1. What is the required depth of the louver?
  - 2"
  - 4"
  - 6"
  - Other \_\_\_\_\_
2. What are the dimensions of the wall opening? W \_\_\_\_\_ X H \_\_\_\_\_  
Always indicate the width first even if shorter than the height. The width dimension will dictate the length of the blades.
3. Does the louver need to have drainable blades?
  - Yes
  - No
4. Does the louver require adjustable damper blades?
  - Yes
    - Manual Hand Quadrant
    - Electric Motor Actuation
  - No
5. Does the louver require a flange?
  - No Flange (Channel Frame)
  - Full Flange
  - Bottom Flange
6. Does the louver require a sleeve?
  - Yes
    - If Yes, Sleeve Length?
      - 8"
      - 10"
      - 12"
      - 14"
      - 16"
    - If Yes, Sleeve Gauge
      - 12GA
      - 14GA
      - 16GA
  - No
7. Is a mesh screen required?
  - No Screen
  - Bird Screen - Front or Back
  - Insect Screen - Front or Back
8. What ratings, if any, does the louver need to meet?
  - \_\_\_\_\_
9. What is the quantity needed?
  - \_\_\_\_\_

Additional information on all of our products may be found on our website: [AireTechnologies.com](http://AireTechnologies.com)

\*\*Please direct all requests to our [AtiOrders@AireTechnologies.com](mailto:AtiOrders@AireTechnologies.com) email



Providing Solutions To The HVAC Industry




Providing Solutions To The HVAC Industry



**LIMITED WARRANTY**  
 All Aire Technologies, Inc. products are warranted for a period of one (1) year from the date of delivery under normal use and service, against defective materials or workmanship. Any product warranties are also limited to duration to the one (1) year period. Any defect appearing more than one (1) year from date of delivery shall be deemed to be due to ordinary wear and tear. This warranty is void if the product has been damaged by unreasonable use, neglect, improper service or other causes not arising out of defects in material or workmanship. Purchaser's repair under this limited warranty shall consist solely of repairing Aire Technologies, Inc. to repair, or Aire Technologies Inc. will attempt to replace free of charge, F.O.B. factory, any defective items supplied at our factory within one year and determined by Aire Technologies, Inc. to be replaceable. The foregoing constitutes the sole and exclusive remedy of the purchaser and the exclusive liability of Aire Technologies, Inc., Monroeville, PA 15146. Unless made under the protection of Local 12 Sheet Metal Workers International Association, Pittsburgh, PA.  
 Aire Technologies, Inc.

**VERT. DAMPER**



**INSTALL WITH ARROW UP**

**CAUTION**  
 Dampers must be checked before installation, check Link whether closed or vertical to be in danger works.  
 1. Install square in a workmanship manner  
 2. If damper malfunctions notify our Agent immediately.  
 3. Refer to manufacturer's installation instructions

Aire Technologies, Inc.

**FOR USE IN STATIC SYSTEMS ONLY**  
 MODEL # \_\_\_\_\_ DATE \_\_\_\_\_

## Introduction

**Aire Technologies** is proud to present our line of air management and life safety products for integration into your HVAC system design, fabrication, or installation. You can expect from **Aire Technologies**, the same unrivaled engineering, manufacturing quality, and delivery expertise, along with the commitment to excellence and value for which the **DMI** name has been known for more than 40 years.

Some of the largest HVAC contractors select **Aire Technologies** as their partner for HVAC air management and life safety devices. This is because they respect the partnership and the added value ATI brings to their business! **Aire Technologies** goes the extra mile to deliver more than quality products; they deliver peace of mind and a commitment to excellence.

Behind each product stands an engineering and technical support staff to ensure you have the right product to meet the requirements of your design or installation, and a sales, marketing, manufacturing, and shipping team to get you what you need, **when you need it**.

## Product Summary

### FIRE DAMPERS

Fire Dampers are offered in two frame profiles: standard 4¼" and thinline 2"

Blades are of an interlocking, curtain style.

Fire Dampers are offered in three types:

**Type A** - in which the blades and frame are in the airstream

**Type B** - in which the blades are out of the airstream

**Type C** - in which the blades and frame are out of the airstream (100% Free Area)

Fire Dampers are offered in two mounting attitudes:

**Vertical** - mounted in horizontal duct run and where blade closure is via gravity

**Horizontal** - mounted in vertical duct run and where blade closure is spring facilitated

Fire dampers are UL 555 Classified and rated for 1½ hours or 3 hours. The dampers are activated via a heat responsive device known as a fusible link.

Fire dampers are offered for use in both static and dynamic systems

**Static systems** are those in which the system fans shut down during fire and smoke control.

**Dynamic systems** are those in which the system fans remain running during fire and smoke control.

In accordance with industry standard, fire dampers are undersized ¼".

Fire dampers are available in galvanized and stainless steel.

### CERTIFICATIONS AND APPROVALS

Aire Technologies Fire Dampers have been approved by the New York City Department of Buildings MEA Division and by the California State Fire Marshal.

#### PRODUCTS ARE APPROVED BY THE FOLLOWING AGENCIES:



#### PRODUCTS MANUFACTURED BY MEMBERS OF THE SMART SHEET METAL WORKERS UNION



**Standard Construction: Profiles**

Standard Profile - 4 1/4" 22Ga 1 Piece Rollformed Frame  
  
Thinline Profile - 2" 22Ga 1 Piece Rollformed Frame

**Materials**

Galvanized Steel - Standard  
Stainless Steel - Optional

**Orientations**

Vertical or Horizontal Installations  
Type C Round, Oval, or Rectangular Transitions

**22Ga Optional Sleeves**

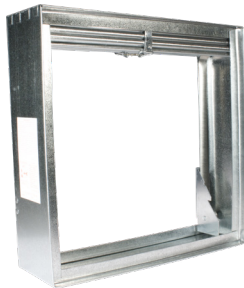
12" Sleeve - Standard  
8", 17", 20", or 24" - Optional

**Fusible Links**

165° Rated Link - Standard  
212° Rated Link - Optional

## Series 75

Static Fire Dampers - UL Classified UL 555 - 1 1/2 Hour Rating, Static for Use in Installations Rated 3 Hours or less



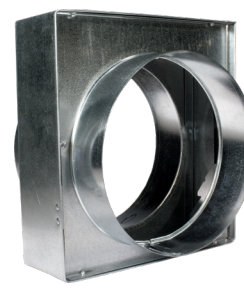
### Type A

**Blades**  
In Air-Stream  
  
**Vertical Sizes**  
4" x 4" to 60" x 60"  
Multi-section  
up to 120" x 120"  
  
**Horizontal Sizes**  
4" x 4" to 40" x 60"  
Multi-section  
up to 120" x 120"



### Type B

**Blades**  
Out of Air-Stream  
  
**Vertical Sizes**  
4" x 3" to 60" x 54"  
Multi-section  
up to 120" x 114"  
  
**Horizontal Sizes**  
4" x 3" to 40" x 54"  
Multi-section  
up to 120" x 108"



### Type C

**Blades**  
Blades and Frame Out of Air-Stream 100% Free Area  
  
**Vertical Sizes**  
4" to 53"  
Oval and Rectangular  
6" x 6" to 58" x 52"  
  
**Horizontal Sizes**  
4" to 38"  
Oval and Rectangular  
6" x 6" to 38" x 52"

## Series 05

Static Fire Dampers - UL Classified UL 555 - 3 Hour Rating, Static for Use in Installations Rated 3 Hours or Greater



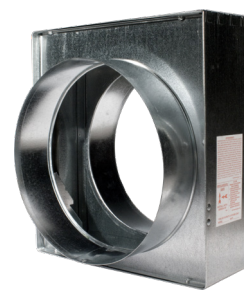
### Type A

**Blades**  
In Air-Stream  
  
**Vertical Sizes**  
4" x 4" to 60" x 60"  
Multi-section  
up to 120" x 120"  
  
**Horizontal Sizes**  
4" x 4" to 40" x 60"  
Multi-section  
120" x 60" or 80" x 96"



### Type B

**Blades**  
Out of Air-Stream  
  
**Vertical Sizes**  
4" x 3" to 60" x 54"  
Multi-section  
up to 120" x 114"  
  
**Horizontal Sizes**  
4" x 3" to 40" x 54"  
Multi-section  
120" x 54" or 80" x 84"



### Type C

**Blades**  
Blades and Frame Out of Air-Stream 100% Free Area  
  
**Vertical Sizes**  
4" to 53"  
Oval and Rectangular  
6" x 6" to 58" x 52"  
  
**Horizontal Sizes**  
4" to 38"  
Oval and Rectangular  
6" x 6" to 38" x 52"

## Series 65

Thinline Static Fire Dampers - UL Classified UL 555 - 1 1/2 Hour Rating, Static for Use in Installations Rated 3 Hours or less



### Type A

**Blades**  
In Air-Stream  
  
**Vertical Sizes**  
4" x 4" to 48" x 49"  
  
**Horizontal Sizes**  
4" x 4" to 36" x 36"



### Type B

**Blades**  
Out of Air-Stream  
  
**Vertical Sizes**  
4" x 3" to 48" x 41"  
  
**Horizontal Sizes**  
4" x 3" to 36" x 30"

## Series 95

Thinline Static Fire Dampers - UL Classified UL 555 - 3 Hour Rating, Static for Use in Installations Rated 3 Hours or Greater



### Type A

**Blades**  
In Air-Stream  
  
**Vertical Sizes**  
4" x 4" to 48" x 49"



### Type B

**Blades**  
Out of Air-Stream  
  
**Vertical Sizes**  
4" x 3" to 48" x 41"

**Standard Construction: Profiles**

Standard Profile - 4¼" 22Ga 1 Piece Rollformed Frame  
 Thinline Profile - 2" 22Ga 1 Piece Rollformed Frame  
 Dynamic for Installation in Systems Where Fans Remain Running During Fire and Smoke Control

**Materials**

Galvanized Steel - Standard  
 Stainless Steel - Optional

**Orientations**

Vertical or Horizontal Installations  
 Type C Round, Oval, or Rectangular Transitions

**22Ga Optional Sleeves**

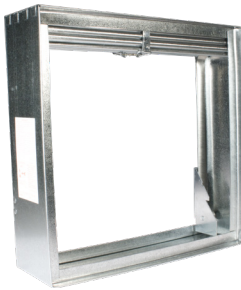
12" Sleeve - Standard  
 8", 17", 20", or 24" - Optional

**Fusible Links**

165° Rated Link - Standard  
 212° Rated Link - Optional

## Series 77

Dynamic Fire Dampers - UL Classified UL 555 - 1½ Hour Rating, Dynamic for Use in Installations Rated 3 Hours or less



**Type A**

**Blades**  
 In Air-Stream

**Vertical Sizes**  
 4" x 4" to 36" x 36"

**Horizontal Sizes**  
 4" x 4" to 24" x 24"

**Airflow Pressure Ratings**  
 Airflow Pressure Ratings:  
 Up to 3,000 FPM at 4" W.G.  
 See Data Sheet for Details



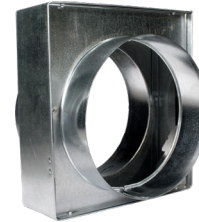
**Type B**

**Blades**  
 Out of Air-Stream

**Vertical Sizes**  
 4" x 3" to 36" x 32"

**Horizontal Sizes**  
 4" x 3" to 24" x 21"

**Airflow Pressure Ratings**  
 Airflow Pressure Ratings:  
 Up to 3,000 FPM at 4" W.G.  
 See Data Sheet for Details



**Type C**

**Blades**  
 Blades and Frame Out of Air-Stream 100% Free Area

**Vertical Sizes**  
 4" to 31"  
 Oval and Rectangular  
 6" x 6" to 34" x 31"

**Horizontal Sizes**  
 4" to 20"  
 Oval and Rectangular  
 6" x 6" to 22" x 20"

## Series 99

Dynamic Fire Dampers - UL Classified UL 555 - 3 Hour Rating, Dynamic for Use in Installations Rated 3 Hours or Greater



**Type A**

**Blades**  
 In Air-Stream

**Vertical Sizes**  
 4" x 4" to 36" x 36"

**Horizontal Sizes**  
 4" x 4" to 24" x 24"

**Airflow Pressure Ratings**  
 Airflow Pressure Ratings:  
 Up to 3,000 FPM at 4" W.G.  
 See Data Sheet for Details



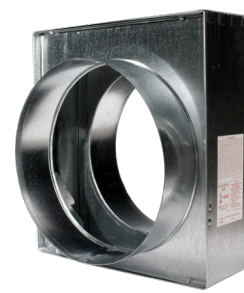
**Type B**

**Blades**  
 Out of Air-Stream

**Vertical Sizes**  
 4" x 4" to 36" x 32"

**Horizontal Sizes**  
 4" x 4" to 24" x 21"

**Airflow Pressure Ratings**  
 Airflow Pressure Ratings:  
 Up to 3,000 FPM at 4" W.G.  
 See Data Sheet for Details



**Type C**

**Blades**  
 Blades and Frame Out of Air-Stream 100% Free Area

**Vertical Sizes**  
 4" to 31"  
 Oval and Rectangular  
 6" x 6" to 34" x 31"

**Horizontal Sizes**  
 4" to 20"  
 Oval and Rectangular  
 6" x 6" to 22" x 20"

## Series 61

Dynamic Thinline Fire Dampers - UL Classified UL 555 - 1½ Hour Rating, Dynamic for Use in Installations Rated 3 Hours or less



**Type A**

**Blades**  
 In Air-Stream

**Vertical Sizes**  
 4" x 4" to 24" x 24"

**Horizontal Sizes**  
 4" x 4" to 12" x 12"

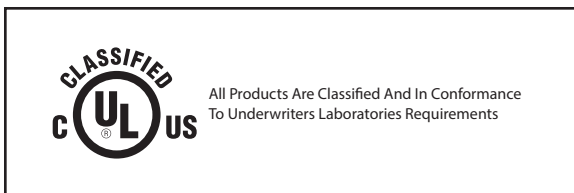


**Type B**

**Blades**  
 Out of Air-Stream

**Vertical Sizes**  
 4" x 4" to 24" x 20"

**Horizontal Sizes**  
 4" x 4" to 4" x 9"



**CSFM Numbers:**

Series 75 and 05: 3225-1650:0107

Thinline Models 65 and 95: 3225-1650:0107

# Product Survey

Fire Dampers

## Information required for Fire Dampers:

1. Are these dampers to be installed in a system in which the fans continue to run during fire and smoke control?
  - Yes (Dynamic)
  - No (Static)
2. Are these dampers to be installed in ducts where they penetrate a:
  - Wall (Ductwork running horizontal)
  - Floor (Ductwork running vertical)
3. What is the fire rating of the partition? \_\_\_\_\_
4. Are there any dimensional restrictions in the partition that might impact the profile (thickness) of the damper's frame?
  - Yes
  - No
5. What are the duct dimensions? W \_\_\_\_\_ X H\* \_\_\_\_\_  
Always indicate the width first even if shorter than the height. The width dimension will dictate the length of the blades.  
*\* The number of blades increases with damper height.*
6. The damper's blades are to be:
  - In the air stream (Type A)
  - Out of the air stream (Type B)
7. The whole appliance, blades AND frame, are to be out of the air stream (100% free area):
  - Yes (Type C may have round, oval, or rectangular collars)
  - No
8. What fusible link temperature is required?
  - 165°
  - 212°
9. Are there any requirements for a product manufactured in stainless steel?
  - Yes
  - No
10. Will sleeves be factory or field installed?
  - Factory
  - Field

If factory, what is the length of sleeve required?

  - 8"
  - 12"
  - 17"
  - 20"
11. Retaining angles to be supplied from:
  - Factory
  - Field

Additional information on all of our products may be found on our website: [AireTechnologies.com](http://AireTechnologies.com)

\*\*Please direct all requests to our [AtiOrders@AireTechnologies.com](mailto:AtiOrders@AireTechnologies.com) email



Providing Solutions To The HVAC Industry



Providing Solutions To The HVAC Industry

## Introduction

**Aire Technologies** is proud to present our line of air management and life safety products for integration into your HVAC system design, fabrication, or installation. You can expect from **Aire Technologies**, the same unrivaled engineering, manufacturing quality, and delivery expertise, along with the commitment to excellence and value for which the **DMI** name has been known for more than 40 years.

Some of the largest HVAC contractors select **Aire Technologies** as their partner for HVAC air management and life safety devices. This is because they respect the partnership and the added value ATI brings to their business! **Aire Technologies** goes the extra mile to deliver more than quality products; they deliver peace of mind and a commitment to excellence.

Behind each product stands an engineering and technical support staff to ensure you have the right product to meet the requirements of your design or installation, and a sales, marketing, manufacturing, and shipping team to get you what you need, **when you need it**.

## Product Summary

### FIRE AND LEAKAGE RATED DAMPERS

Aire Technologies offers a variety of leakage rated dampers including Combination Fire & Smoke Dampers, Smoke Dampers, and Air Control Dampers. Smoke Dampers and Combination Fire & Smoke Dampers are available in three leakage ratings: Class I (ultra low leakage), Class II (low leakage), or Class III (leakage). ATI Smoke Dampers are UL 555S rated. The Combination Fire & Smoke Dampers are UL 555 & 555S rated for 1½ hours or 3 hours at 250° or 350°. Combination Fire & Smoke Dampers are provided in factory installed sleeves. The actuator may be mounted internally or externally.

### CERTIFICATIONS AND APPROVALS

Aire Technologies Combination Fire and Smoke Dampers have been approved by the California State Fire Marshal and by the Texas Department of Insurance.



**Series 10 and 30 - CSFM BML Listing No. 3235-1650:0108**

**Series 20 - CSFM BML Listing No. 3230-1650:0109**

**Series 40 - CSFM BML Listing No. 3235-1650:0500**

#### PRODUCTS ARE APPROVED BY THE FOLLOWING AGENCIES:



#### PRODUCTS MANUFACTURED BY MEMBERS OF THE SMART SHEET METAL WORKERS UNION



<b>Standard Construction:</b>	<b>Leakage Classes</b>	<b>Materials</b>	<b>Orientations</b>	<b>22Ga Optional Sleeves</b>	<b>Temperature Ratings</b>	<b>Thermal Disk Ratings</b>
	Class 1 - Ultra-Low Class 2 - Low	Galvanized Steel	Vertical or Horizontal Installations	17" Sleeve - Standard 20" or 24" - Optional	250° Rated - Standard 350° Rated - Optional	165° - Standard 212° - Optional

## Series 10

Fire And Smoke Damper - UL Classified UL 555 and 555S - 1½ Hour Rating, for Use in Installations Rated Less Than 3 Hours



### Sizes

Single-Section up to 36" x 48"  
Multi-Section up to 144"x48"

### Blades

16Ga Galvanized 3 "V" Formed for Rigidity  
Opposed Operation  
Double Yoke Kneelock for Increased Stability

### Airflow Pressure Ratings

2,000 FPM at 4" W.G. Maximum

### Options

Rectangle, Round, Oval or Special Transitions  
External or Internal Electric Actuator

## Series 30

Fire And Smoke Damper - UL Classified UL 555 and 555S - 3 Hour Rating, for Use in Installations Rated 3 Hours or Greater



### Sizes

Single-Section up to 36" x 36"

### Blades

16Ga Galvanized 3 "V" Formed for Rigidity  
Opposed Operation  
Double Yoke Kneelock for Increased Stability

### Airflow Pressure Ratings

2,000 FPM at 4" W.G. Maximum

### Options

Rectangle, Round, Oval or Special Transitions  
External or Internal Electric Actuator

## Series 40

Corridor Damper - UL Classified UL 555 and 555S - 1 Hour Rating



### Uses

Where Air Ducts Penetrate or Terminate at Openings in the Ceilings of Interior Corridors

### Sizes

Single-Section up to 24" x 24"

### Blades

16Ga Galvanized 3 "V" Formed for Rigidity  
Opposed Operation  
Double Yoke Kneelock for Increased Stability

### Airflow Pressure Ratings

2,000 FPM at 4" W.G. Maximum

### Options

Rectangle, Round, Oval or Special Transitions  
External or Internal Electric Actuator

**Standard Construction:****Materials**

Galvanized Steel

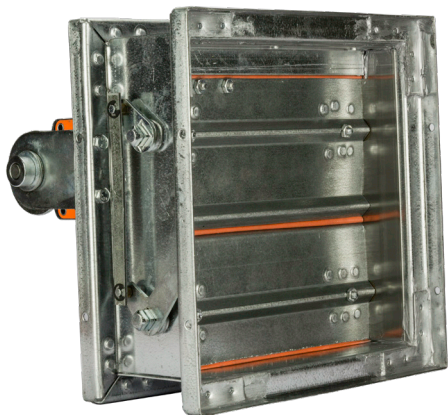
**Orientations**

Vertical or Horizontal Installations

**22Ga Optional Sleeves**12" Sleeve - Standard  
8", 17", 20" or 24" - Optional**Temperature Ratings**250° Rated - Standard  
350° Rated - Optional**Temperature Ratings**250° - Standard  
350° - Optional

## Series 20

Smoke Damper - UL Classified UL 5555

**Standards**

NFPA Standard 90A ICC Building Codes

**Sizes**

Single-Section up to 36" x 48"

Multi-Section: Leakage Class 1 Ultra-Low: 108" x 48"

Leakage Class 2 Low: 144" x 48"

**Airflow Pressure Ratings**

2,000 FPM at 4" W.G. Maximum

## Series 80

Air Control Damper

**Standard Profile**

4 1/4" 22Ga 1 Piece Rollformed Frame

**Sizes**

Single-Section Sizes From 8" x 8" to 36" x 48"

**Frame**

16Ga Galvanized Steel 5" x 1" Channel Construction with Die-Formed Corner Gussets

**Blades**

16Ga Galvanized 3" V Formed for Rigidity

Opposed Closed Action

**Bearings**

Sintered Bronze Oil Impregnated or Non-Metallic Celcon® Acetal Plastic

**Axles**

1/2" Square Zinc Plated Steel

**Linkage**

Zinc Plated Steel Concealed in the Channel Frame

**Optional Components**

Manual Hand Quad Regulator (Shipped Loose)

Blade and Jamb Seals

Extended Jack Shafts:

4" (Series 80)

6" (Series 81)

11" (Series 82)

\* Consult Aire Technologies for Factory Installed Actuator

Series 10, 20, 30, and 40 Are Classified And In Conformance  
To Underwriters Laboratories Requirements

# Product Surveys

Leakage Rated Dampers

## Information Required for Combination Fire and Smoke Dampers:

1. What leakage class is required?
  - Class I Ultra-Low Leakage
  - Class II Low Leakage
2. What is the fire rating of the partition?
  - 1½ Hours
  - 3 Hours
  - 1 Hour Corridor Ceiling
3. What temperature rating do you require?
  - 250°F
  - 350°F
4. What are the duct dimensions? W \_\_\_\_ X H \_\_\_\_  
Always indicate the width first even if shorter than the height. The width dimension will dictate the length of the blades.
5. Does the damper require a transition?
  - Round
  - Oval
  - Rectangular
  - None
6. What voltage actuator is required?
  - 24 Volt
  - 120 Volt
7. Where is the actuator to be mounted?
  - External (Outside damper; out of the airstream)
  - Internal (Inside damper; in the airstream)
8. Is Grille Access or an Out-of-Wall Damper Required??
  - Out-of-Wall
  - Grille Access
9. Do you require an end switch?
  - Yes
  - No
10. What sleeve length is required?
  - 17"
  - 20"
  - 24"
11. At what temperature does the damper need to close?
  - 165°F
  - 212°F

## Information Required for Smoke Dampers:

1. What leakage class is required?
  - Class I Ultra-Low Leakage
  - Class II Low Leakage
2. What temperature rating do you require?
  - 250°F
  - 350°F
3. What are the damper dimensions? W \_\_\_\_ X H \_\_\_\_  
Always indicate the width first even if shorter than the height. The width dimension will dictate the length of the blades.
4. Does the damper require a transition?
  - Round
  - Oval
  - Rectangular
  - None
5. What voltage actuator is required?
  - 24 Volt
  - 120 Volt
6. Where is the actuator to be mounted?
  - External (Outside damper; out of the airstream)
  - Internal (Inside damper; in the airstream)
7. Do you require an end switch?
  - Yes
  - No

## Information Required for Air Control Dampers:

1. Do you require an ultra low leakage damper?
  - Yes
  - No
2. What are the damper dimensions? W \_\_\_\_ X H \_\_\_\_  
Always indicate the width first even if shorter than the height. The width dimension will dictate the length of the blades.
3. Bearing material?
  - Non-metallic Celcon® (Standard)
  - Bronze
4. What size jackshaft extension is required?
  - 4"
  - 6"
  - 11"
5. What voltage actuator is required?
  - None, Manual
  - 24v
  - 120v
  - 240v
6. Do you require an End Switch?
  - Yes
  - No
7. 2 position or Modulating Actuator?
  - 2 Position
  - Modulating

Additional information on all of our products may be found on our website: [AireTechnologies.com](http://AireTechnologies.com)

\*\*Please direct all requests to our [AtiOrders@AireTechnologies.com](mailto:AtiOrders@AireTechnologies.com) email



Providing Solutions To The HVAC Industry



Providing Solutions To The HVAC Industry

## Introduction

**Aire Technologies** is proud to present our line of air management and life safety products for integration into your HVAC system design, fabrication, or installation. You can expect from **Aire Technologies**, the same unrivaled engineering, manufacturing quality, and delivery expertise, along with the commitment to excellence and value for which the **DMI** name has been known for more than 40 years.

Some of the largest HVAC contractors select **Aire Technologies** as their partner for HVAC air management and life safety devices. This is because they respect the partnership and the added value ATI brings to their business! **Aire Technologies** goes the extra mile to deliver more than quality products; they deliver peace of mind and a commitment to excellence.

Behind each product stands an engineering and technical support staff to ensure you have the right product to meet the requirements of your design or installation, and a sales, marketing, manufacturing, and shipping team to get you what you need, **when you need it**.

## Product Summary

### CEILING RADIATION DAMPERS

Ceiling Radiation Dampers (CRDs) are offered in rectangular and round configurations. These are UL 555C classified for use in installations rated up to 3 hours. CRD blades are either a single blade style or a centrally hinged butterfly style.

Two options for link attachment are:

**Standard link**- a link mounted between the blades

**Easy Access link**- a link mounted between a hook and catch on the side of the blades

In accordance with industry standard, CRDs are undersized ¼".

CRDs are available in galvanized steel.

### WOOD TRUSS ASSEMBLIES

A combustible assembly is a form of construction comprised of a floor-ceiling or roof-ceiling as an assembly which, when fire tested as a unit, has been assigned a fire endurance rating expressed in hours.\* Series 50 with boot or box, Series 51 with boot, Series 57, and Series 58 are approved for floor/ceiling UL L-587 and roof/ceiling P-556 designs among others. Further information about L-587 and P-556 can be found in the UL Product iQ. Contact Aire Technologies for assistance in selecting the right device for your application.

### CERTIFICATIONS AND APPROVALS

Aire Technologies Ceiling Radiation Dampers have been approved by the New York City Department of Buildings MEA Division and by the California State Fire Marshal.

ATI products that have been approved by UL for exclusive use in L-587 and P-556; and have been approved for use in other fire resistive assemblies. For a complete list of approved designs, please see our product submittal sheets.

#### PRODUCTS ARE APPROVED BY THE FOLLOWING AGENCIES:



#### PRODUCTS MANUFACTURED BY MEMBERS OF THE SMART SHEET METAL WORKERS UNION



**Standard Construction:** Profiles  
22Ga 1 Piece Rollformed Frame and Blades

**Materials**  
Galvanized Steel

**Fusible Links**  
165° Rated Link - Standard  
212° Rated Link - Optional

## Series 50

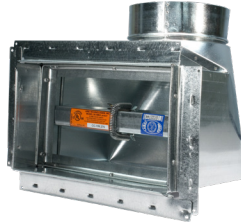
Ceiling Radiation Dampers - UL Classified UL 555C - For Use in Installations Rated 3 Hours or Less.



### Series 50

**Sizes:**  
4" x 6" or 6" x 4" to 24" x 24"

**Insulation:**  
Ceramic Thermal Blanket  
Provide on Units with Area  
> 84 in<sup>2</sup>



### Series 50 In Boot

**Sizes:**  
4" x 6" x 4"0 to 14" x 14" x 10"0

**Enclosure Types:**  
Flanged or Non-Flanged  
90° Boot, Straight Boot or  
End Boot

**UL Design:**  
UL 263 Approved for Use in:  
Floor/Ceiling L587\*, L528, L558,  
L562, L563, L574, and L585  
Roof/Ceiling P556\*, P533, P544,  
P545, and P547, and P580



### Series 50 In Box

**Sizes:**  
4" x 8" to 14" x 14"

**Enclosure Types:**  
Flanged or Non-Flanged Box

**UL Design:**  
UL 263 Approved for Use in:  
Floor/Ceiling L587\*, L528,  
and L562  
Roof/Ceiling P556\* and P580



## Series 51

Ceiling Radiation Dampers - UL Classified UL 555C - For Use in Installations Rated 3 Hours or Less.



### Series 51SB

**Vertical Sizes:**  
6" x 4" to 24" x 12"



### Series 51SB In Boot

**Sizes:**  
6" x 4" x 4"0 to 14" x 12" x 10"0

**Enclosure Types:**  
Flanged or Non-Flanged  
90° Boot

**UL Design:**  
UL 263 Approved for Use in:  
Floor/Ceiling L587\*, L528, L558, L562, L563 L574, and L585  
Roof/Ceiling P556\*, P533, P544, P545, and P580



## Series 55

Ceiling Radiation Dampers - UL Classified UL 555C - For Use in Installations Rated 3 Hours or Less.



### Series 55SL

**Sizes:**  
4"0 to 24"0

**Insulation:**  
Ceramic Thermal Blanket  
Provide on Units with Area  
> 84 in<sup>2</sup>



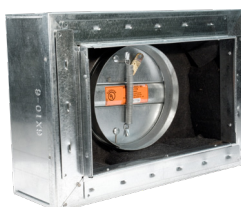
### Series 55EA

**Sizes:**  
5"0 to 24"0

**Insulation:**  
Ceramic Thermal Blanket Provide on Units with Area > 84 in<sup>2</sup>

## Series 57

Ceiling Radiation Dampers - UL Classified UL 263 - For Use in Wood Truss Floor/Ceiling and Roof/Ceiling Assemblies Rated 1 Hour or Less.



### Series 57IB

**Sizes:**  
4" x 8" x 4"0 to 16" x 16" x 12"0

**Enclosure Types:**  
28Ga Box and Collar Available with 1½" R-6 or 2" R-8 Duct Liner  
Insulation

**Insulation:**  
Ceramic Thermal Blanket Provide on Units with Area > 84 in<sup>2</sup>

**UL Design:**  
UL 263 Approved for Use in:  
Floor/Ceiling L587\*, L528, L558, L562, L574, and L585  
Roof/Ceiling P556\*, P533, P545, P547, and P580

**Exclusive Feature:**  
Approval for Class 0 and 1 Flex-Duct or Steel Pipe Elbow Connections  
to Achieve Top-Out or Side-Out Configurations



**Standard Construction:**

**Profiles**

22Ga 1 Piece Rollformed Frame and Blades

**Materials**

Galvanized Steel

**Fusible Links**

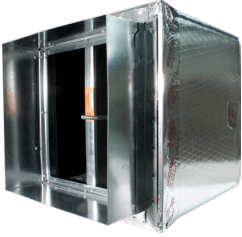
165° Rated Link - Standard  
212° Rated Link - Optional

**UL Design**

UL263 Approved for use in:  
Floor/Ceiling L587\*, L528, L558, L562, L574, and L585  
Roof/Ceiling P556\*, P533, P545, P547, and P580

## Series 58

Ceiling Radiation Dampers For Duct Opening - UL Classified UL 263 - For Use in Wood Truss Floor/Ceiling and Roof/Ceiling Assemblies Rated 1 Hour or Less



**Sizes:**  
4" x 8" x 14"h to 20" x 16" x 16"h

**Enclosure Types - 58DD:**  
Incorporates Series 50 UL555C Rated Ceiling Damper with 1½" R-6 or R-8 Ductboard Box - BOX INCLUDED

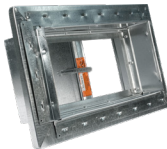
**Insulation:**  
Ceramic Thermal Blanket Provide on Units with Area > 84 in2

**Enclosure Types - 58EAD/SD:**  
Incorporates Series 50 UL 555C Rated Ceiling Damper with 1½" R-6 or R-8 Ductboard Retainer - BOX NOT INCLUDED



## Series 58

Ceiling Radiation Dampers For Register Connections - UL Classified UL 263 - For Use in Wood Truss Floor/Ceiling Assemblies Rated 1 Hour or Less



**Sizes:**  
6" x 8" x 14"h to 20" x 16" x 16"h

**Enclosure Types - 58DR:**  
Incorporates Series 50 UL555C Rated Ceiling Damper with 1½" R-6 or R-8 Ductboard Box - BOX INCLUDED

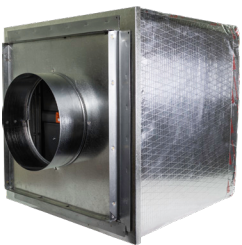
**Insulation:**  
Ceramic Thermal Blanket Provide on Units with Area > 84 in2

**Enclosure Types - 58EAR/SR:**  
Incorporates Series 50 UL 555C Rated Ceiling Damper with 1½" R-6 or R-8 Ductboard Retainer - BOX NOT INCLUDED



## Series 58

Ceiling Radiation Dampers For Round Inlet - UL Classified UL 263 - For Use in Wood Truss Floor/Ceiling Assemblies Rated 1 Hour or Less




**Sizes:**  
6" Diameter to 14" Diameter

**Enclosure Types - 58DC:**  
Incorporates Series 50 UL 555C Rated Ceiling Damper with 1½" R-6 or R-8 Ductboard Box - BOX INCLUDED

**Insulation:**  
Ceramic Thermal Blanket Provide on Units with Area > 84 in2

**Enclosure Types - 58EAC/SC:**  
Incorporates Series 50 UL 555C Rated Ceiling Damper with 1½" R-6 or R-8 Ductboard Retainer - BOX NOT INCLUDED





All Products Are Classified And In Conformance To Underwriters Laboratories Requirements



**CSFM Numbers:**

**Series 58:** 3226-1650:0102

**Series 50 and 55:** 3226-1650:0103

**Series 51SB:** 3226-1650:0104

**Series 50 w/Boot and w/Box:** 3226-1650:0105

**Series 57IB:** 3226-1650:0106

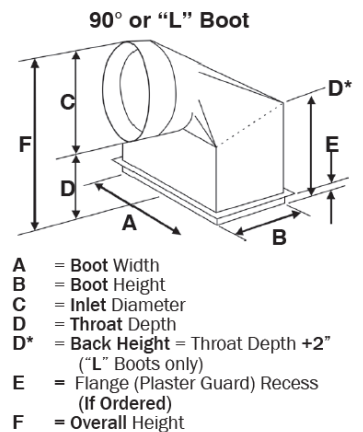
\* ATI Exclusive Listings

# Product Survey

Ceiling Radiation Dampers

## Information required for Ceiling Radiation Dampers:

1. Quantity: \_\_\_\_\_
2. The dimensions of the duct opening are:
  - Rectangular
  - Round
3. What are the dimensions of the duct? W \_\_\_\_\_ X H \_\_\_\_\_  
Always indicate the width first even if it is shorter than the height. The width dimension of a CRD will dictate the length of the blade and hinge.
4. What temperature fusible link is required?
  - 165°
  - 212°
5. Are these products being installed in a UL Classified wood truss floor/ceiling or roof/ceiling assembly?
  - Yes  
If yes, do you know the UL classified assembly number? This number will be specified by the architect.  
Example: Aire Technologies L-587. \_\_\_\_\_
  - No
6. Does it need to be factory insulated?
  - Yes
  - No  
If no, please choose one of the following<sup>1</sup>:
    - Series 50 with L Boot<sup>2</sup>
    - Series 50 with Straight Boot<sup>2</sup>
    - Series 50 with End Boot<sup>2</sup>
    - Series 50 with Metal Box (Model 50EAX)
    - Series 51 with Boot
  - If yes, please choose one of the following:
    - Series 57 – grille outlet
    - Series 58 – grille outlet
    - Series 58 – duct drop
7. If Series 58 is chosen, would you like the ductboard factory supplied or field supplied?
  - Factory
  - Field
8. What is the diameter of the collar of the register boot or register box (see dimension "C" in figure to the right) \_\_\_\_\_



1. For applications requiring increased airflow/efficiency a single blade "free-flow" CRD is available.
2. Optional 8" throat available upon request.

Additional information on all of our products may be found on our website: [AireTechnologies.com](http://AireTechnologies.com)

\*\*Please direct all requests to our [AtiOrders@AireTechnologies.com](mailto:AtiOrders@AireTechnologies.com) email



Providing Solutions To The HVAC Industry



**AireTechnologies.com**  
210 5th Street, Charleroi PA, 15022  
**Quotes And Orders: [AtiOrders@AireTechnologies.com](mailto:AtiOrders@AireTechnologies.com)**  
P: 1.866.421.AIRE | F: 724.310.1262