

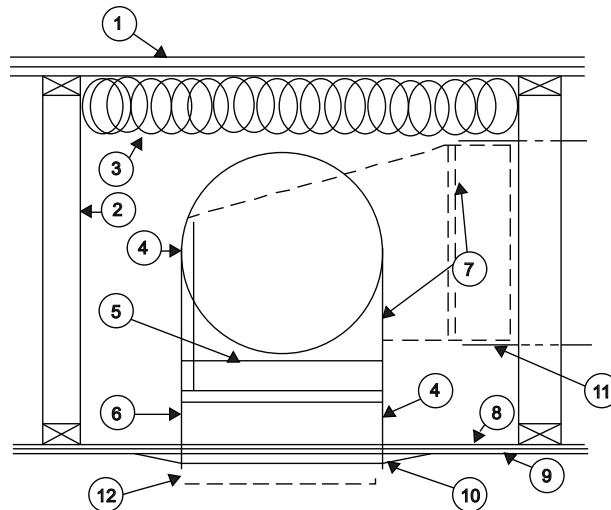
INSTALLATION INSTRUCTIONS

Series 51 With Boot - CRD

For Installation in Floor-Ceiling Assembly Design No. L-528, L-558, L-562, L-574 L-585, L-587 and Roof-Ceiling Assembly Design No. P-533, P-545, P-547, P-556, P-580 With Rating Of 1 Hour Or Less

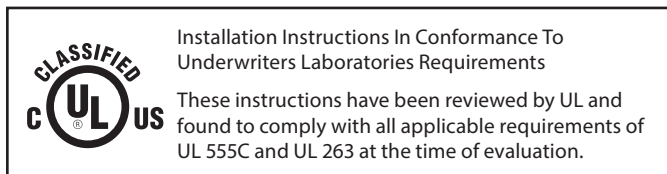
INSTALLATION INSTRUCTIONS:

1. Measure the distance between the trusses, add 7", and cut the "S" slip for mounting, 28ga minimum and 2 pieces per boot assembly. Snap the "S" slips onto the mounting flange on the appropriate opposite sides of the register opening the of box.
2. Locate the position of the boot (must have $\frac{3}{4}$ " clearance between the boot and the side of either/both truss[es]) and cut only one (only if necessary) resilient channel to clear the dimension of the boot. Attach the mounting rails to the bottom of the trusses with a minimum of 2 fasteners at each point using #6 nails, or #8 or #10 screws, having minimum length of $1\frac{1}{2}$ ". Ensure the bottom of the boot is in the same plane as the resilient channels (top side of the gypsum board ceiling), use small furring blocks if necessary.
3. Cycle the ceiling damper several times to ensure there is no impediment to damper function. Squeeze the ceiling damper blades together and set the fusible link in place.
4. Attach Class 0, or Class 1 flex-duct as prescribed by the manufacturers installation instructions provided with that product.
5. Hole in the gypsum board ceiling material shall not exceed register opening by more than $\frac{1}{16}$ " on any side.
6. Register, grille, or diffuser shall be attached with screws sufficiently long enough to penetrate the ceiling and the plaster guard flange ($1\frac{1}{2}$ ", min), sandwiching the ceiling material, as located by the mounting holes found in those products.
7. Fastener positions must not interfere with ceiling damper blade operation.



ITEM DESCRIPTION:

1. Finish Floor system
2. Wood Trusses
3. Insulation
4. Galvanized Steel Boot "L", Straight, or, End
5. UL 555C Ceiling Damper
6. Register Clearance - 2"
7. Inlet/outlet Collar (1) Parallel to, or transverse to Trusses
8. Resilient Channels
9. Gypsum board ceiling material
10. Register, grille, diffuser, (by others)
11. Class 0, or class 1 Flex-duct (by others)
12. Alternate duct drop connection



ALL INSTALLATIONS ARE SUBJECT TO LOCAL AUTHORITY APPROVAL PRIOR TO ORDERING DAMPERS AND DAMPER INSTALLATION