



True TrussTM



Specifying Simplified!

Knowing which life safety products are approved for multi-family wood truss construction can be confusing for everyone. Aire Technologies' True Truss aims to make that process easier. When you specify True Truss, you are ensured a quality product that carries the UL rating you need for your design and you get a UL263 product that is easily identifiable in the field!

Just Look For The Label.

Introduction

Aire Technologies, Inc. is proud to present our line of air management and life safety products for integration into your HVAC system design, fabrication, or installation. You can expect from **Aire Technologies, Inc.**, the same unrivaled engineering, manufacturing quality, and delivery expertise, along with the commitment to excellence and value for which the **DMI** name has been known for more than 40 years.

Aire Technologies, Inc. products are a further extension of the **DMI** products that have been hallmarks for dependability, and provide the confidence you've come to expect.

Behind each product stands an engineering and technical support staff to ensure you have the right product to meet the requirements of your design or installation, and a sales, marketing, manufacturing, and shipping team to get you what you need, **when you need it.**

Additional product, ordering, and shipping information will be found in our product literature, spec data sheets, and on our website at **airetechnologies.com**.



Table of Contents

PRODUCT SUMMARY	1
STATIC FIRE DAMPERS	
Series 75 - 1½ Hour Rated - Standard Profile Type A, B, and C.....	3
Series 65 - 1½ Hour Rated - Thinline Profile Type A and B.....	4
Series 05 - 3 Hour Rated - Standard Profile Type A, B, and C.....	5
Series 95 - 3 Hour Rated - Thinline Profile Type A and B.....	6
DYNAMIC FIRE DAMPERS	
Series 77 - 1½ Hour Rated - Standard Profile Type A, B, and C.....	7
Series 99 - 3 Hour Rated - Standard Profile Type A, B, and C.....	8
Series 61 - 1½ Hour Rated - Thinline Profile Type A and B.....	9
CEILING RADIATION DAMPERS	
Series 51.....	11
Series 50.....	12
Series 55.....	13
Series 57.....	14
Series 58 Duct Drop	15
Series 58 Register Opening	16
Series 58 Duct Drop - Round Inlet.....	17
COMBINATION FIRE SMOKE & CORRIDOR DAMPERS	
Series 10, 30, and 40	19
SMOKE DAMPERS	
Series 20.....	21
AIR CONTROL DAMPERS	
Series 80.....	23
ACCESSORY ITEMS	
Retaining Angles, Hemmed S, and Sleeves	24
Thermal Blankets and Fusible Links	25
Access Doors	26

Product Summary

FIRE DAMPERS

Fire Dampers are offered in two frame profiles: standard 4¼" and thinline 2".

Blades are of an interlocking, curtain style.

Fire Dampers are offered in three types:

Type A - in which the blades and frame are in the airstream

Type B - in which the blades are out of the airstream

Type C - in which the blades and frame are out of the airstream (100% Free Area)

Fire Dampers are offered in two mounting attitudes:

Vertical - mounted in horizontal duct run and where blade closure is via gravity

Horizontal - mounted in vertical duct run and where blade closure is spring facilitated

Fire dampers are UL 555 Classified and rated for 1½ hours or 3 hours. The dampers are activated via a heat responsive device known as a fusible link.

Fire dampers are offered for use in both static and dynamic systems

Static systems are those in which the system fans shut down during fire and smoke control.

Dynamic systems are those in which the system fans remain running during fire and smoke control.

In accordance with industry standard, fire dampers are undersized ¼".

Fire dampers are available in galvanized and stainless steel.

CEILING RADIATION DAMPERS

Ceiling Radiation Dampers (CRDs) are offered in rectangular and round configurations. These are UL 555C classified for use in installations rated up to 3 hours. CRD blades are either a single blade style or a centrally hinged butterfly style.

Two options for link attachment are:

Standard link- a link mounted between the blades

Easy Access link- a link mounted between a hook and catch on the side of the blades

In accordance with industry standard, CRDs are undersized ¼".

CRDs are available in galvanized steel.

WOOD TRUSS ASSEMBLIES

A combustible assembly is a form of construction comprised of a floor-ceiling or roof-ceiling as an assembly which, when fire tested as a unit, has been assigned a fire endurance rating expressed in hours.* Series 50 with boot or box, Series 51 with boot Series 57, and Series 58 are approved for floor/ceiling UL L-587 and roof/ceiling P-556 designs; among others. Further information about L-587 and P-556 can be found in the UL Fire Resistance Directory. These assemblies are comparable to L-521, L550, L562, L563, P-522, P-544, among others. Contact Aire Technologies for assistance in selecting the right ATI device for your application.

LEAKAGE RATED DAMPERS

Aire Technologies offers a variety of leakage rated dampers including Combination Fire & Smoke Dampers, Smoke Dampers, and Air Control Dampers. Smoke Dampers and Combination Fire & Smoke Dampers are available in three leakage ratings: Class I (ultra low leakage), Class II (low leakage), or Class III (leakage). ATI Smoke Dampers are UL 555S rated. The Combination Fire & Smoke Dampers are UL 555 & 555S rated for 1½ hours or 3 hours at 250° or 350°. Combination Fire & Smoke Dampers are provided in factory installed sleeves. The actuator may be mounted internally or externally.

ACCESSORY ITEMS

A variety of items including sleeves, retaining angles, access doors replacement fusible links, and thermal blankets are offered for convenience in completion of the project's design and/or installation.

CERTIFICATIONS AND APPROVALS

Aire Technologies Fire Dampers and Ceiling Radiation Dampers have been approved by the New York City Department of Buildings MEA Division and by the California State Fire Marshal.

ATI products that have been approved by UL for L-587 and P-556 exclusively; as well as approvals for use in other fire resistive assemblies. For a complete list of approved designs, please see our product submittal sheets.

**PRODUCTS ARE APPROVED BY THE
FOLLOWING AGENCIES:**



**PRODUCTS MANUFACTURED BY MEMBERS OF
THE SMART SHEET METAL WORKERS UNION**



*Fire, Smoke, and Radiation Damper Installation Guide for HVAC Systems, SMACNA, 2002



Product Survey

Fire Dampers

1. Are these dampers to be installed in a system in which the fans continue to run during fire and smoke control?
 - Yes (Dynamic)
 - No (Static)
2. Are these dampers to be installed in ducts where they penetrate a:
 - Wall (Ductwork running horizontal)
 - Floor (Ductwork running vertical)
3. What is the fire rating of the partition? _____
4. Are there any dimensional restrictions in the partition that might impact the profile (thickness) of the damper's frame?
 - Yes
 - No
5. What are the duct dimensions? W _____ X H _____
Always indicate the width first even if shorter than the height. The width dimension will dictate the length of the blades.
**The number of blades increases with damper height.*
6. The damper's blades are to be:
 - In the air stream (Type A)
 - Out of the air stream (Type B)
7. The whole appliance, blades AND frame, are to be out of the air stream (100% free area):
 - Yes (Type C may have round, oval, or rectangular collars)
 - No
8. What fusible link temperature is required?
 - 165°
 - 212°
9. Are there any requirements for a product manufactured in stainless steel?
 - Yes
 - No
10. Will sleeves be factory or field installed?
 - Factory
 - Field
 If factory, what is the length of sleeve required?
 - 8"
 - 12"
 - 17"
 - 20"
11. Retaining angles to be supplied from:
 - Factory
 - Field

Series 75

Static Fire Dampers - 1½ Hour Rated

Profile

Standard Profile - 4¼" 22Ga 1 Piece Rollformed Frame

Material

Galvanized Steel - Standard
Stainless Steel - Optional

Orientation

Available for Vertical or Horizontal Installations
Type C Available with Round, Oval, or Rectangular Collars



UL Classification

UL Classified UL 555 - 1½ Hour Rating, Static for Use in Installations Rated Less Than 3 Hours

Fusible Link

165° Rated Link - Standard
212° Rated Link - Optional

22Ga Optional Sleeves

12" Sleeve - Standard
8", 17", 20", or 24" Lengths - Optional

Type A



Blades

Blades in Air-Stream

Vertical Sizes

4" x 4" to 60" x 60"
Multi-section
up to 120" x 120"

Horizontal Sizes

4" x 4" to 40" x 60"
Multi-section
up to 120" x 120"

Type B



Blades

Blades Out of Air-Stream

Vertical Sizes

4" x 3" to 60" x 54"
Multi-section
up to 120" x 114"

Horizontal Sizes

4" x 3" to 40" x 54"
Multi-section
up to 120" x 108"

Type C



Blades

Blades and Frame Out of Air-Stream 100% Free Area

Vertical Sizes

4" to 53"
Oval and Rectangular
6" x 6" to 58" x 52"

Horizontal Sizes

4" to 38"
Oval and Rectangular
6" x 6" to 38" x 52"

Series 65

Thinline Static Fire Dampers - 1½ Hour Rated



Profile

Thinline Profile - 2" 22Ga 1 Piece Rollformed Frame

Material

Galvanized Steel - Standard
Stainless Steel - Vertical Only Optional

Orientation

Available for Vertical or Horizontal Installations

UL Classification

UL Classified UL 555 - 1½ Hour Rating, Static for Use in Installations Rated Less Than 3 Hours

Fusible Link

165° Rated Link - Standard
212° Rated Link - Optional

22Ga Optional Sleeves

12" Sleeve - Standard
8", 17", 20", or 24" Lengths - Optional

Type A



Blades

Blades in Air-Stream

Vertical Sizes

4" x 4" to 48" x 49"

Horizontal Sizes

4" x 4" to 36" x 36"

Type B



Blades

Blades Out of Air-Stream

Vertical Sizes

4" x 3" to 48" x 41"

Horizontal Sizes

4" x 3" to 36" x 30"

Series 05

Static Fire Dampers - 3 Hour Rated



Profile

Standard Profile - 4¼" 22Ga 1 Piece Rollformed Frame

Material

Galvanized Steel - Standard
Stainless Steel - Optional

Orientation

Available for Vertical or Horizontal Installations
Type C Available with Round, Oval, or Rectangular Collars

UL Classification

UL Classified UL 555 - 3 Hour Rating, Static for Use in Installations Rated Hours or Greater

Fusible Link

165° Rated Link - Standard
212° Rated Link - Optional

22Ga Optional Sleeves

12" Sleeve - Standard
8", 17", 20", or 24" Lengths - Optional

Type A



Blades

Blades in Air-Stream

Vertical Sizes

4" x 4" to 60" x 60"
Multi-section
up to 120" x 120"

Horizontal Sizes

4" x 4" to 40" x 60"
Multi-section
120" x 60" or 80" x 96"

Type B



Blades

Blades Out of Air-Stream

Vertical Sizes

4" x 3" to 60" x 54"
Multi-section
up to 120" x 114"

Horizontal Sizes

4" x 3" to 40" x 54"
Multi-section
120" x 54" or 80" x 84"

Type C



Blades

Blades and Frame Out of Air-Stream 100% Free Area

Vertical Sizes

4" to 53"
Oval and Rectangular
6" x 6" to 58" x 52"

Horizontal Sizes

4" to 38"
Oval and Rectangular
6" x 6" to 38" x 52"

Series 95

Thinline Static Fire Dampers - 3 Hour Rated



Profile

Thinline Profile - 2" 22Ga 1 Piece Rollformed Frame

Material

Galvanized Steel - Standard
Stainless Steel - Optional

Orientation

Available for Vertical Installations Only

UL Classification

UL Classified UL 555 - 3 Hour Rating, Static for Use in Installations Rated 3 Hours or Greater

Fusible Link

165° Rated Link - Standard
212° Rated Link - Optional

22Ga Optional Sleeves

12" Sleeve - Standard
8", 17", 20", or 24" Lengths - Optional

Type A



Blades

Blades in Air-Stream

Vertical Sizes

4" x 4" to 48" x 49"

Type B



Blades

Blades Out of Air-Stream

Vertical Sizes

4" x 3" to 48" x 41"

Series 77

Dynamic Fire Dampers - 1½ Hour Rated



Profile

Standard Profile - 4¼" 22Ga 1 Piece Rollformed Frame
Dynamic for Installation in Systems Where Fans Remain Running
During Fire and Smoke Control

Material

Galvanized Steel - Standard
Stainless Steel - Optional

Orientation

Available for Vertical or Horizontal Installations
Type C Available with Round, Oval, or Rectangular Collars

UL Classification

UL Classified UL 555 - 1½ Hour Rating, Dynamic for Use in
Installations Rated Less Than 3 Hours

Fusible Link

165° Rated Link - Standard
212° Rated Link - Optional

22Ga Optional Sleeves

12" Sleeve - Standard
8", 17", 20", or 24" Lengths - Optional

Type A



Blades

Blades in Air-Stream

Vertical Sizes

4" x 4" to 36" x 36"

Horizontal Sizes

4" x 4" to 24" x 24"

Airflow Pressure Ratings

Vertical: 36" x 36" = 2,000 FPM at 4" W.G.
Horizontal: 24" x 24" = 2,000 FPM at 4" W.G.
Horizontal: 12" x 12" = 3,000 FPM at 4" W.G.

Type B



Blades

Blades Out of Air-Stream

Vertical Sizes

4" x 3" to 36" x 32"

Horizontal Sizes

4" x 3" to 24" x 21"

Airflow Pressure Ratings

Vertical: 24" x 20" = 2,000 FPM at 4" W.G.
Horizontal: 24" x 20" = 3,000 FPM at 4" W.G.
Horizontal: 12" x 9" = 3,000 FPM at 4" W.G.

Type C



Blades

Blades and Frame Out of Air-Stream 100% Free Area

Vertical Sizes

4" to 31"
Oval and Rectangular
6" x 6" to 34" x 31"

Horizontal Sizes

4" to 20"
Oval and Rectangular
6" x 6" to 22" x 20"

Series 99

Dynamic Fire Dampers - 3 Hour Rated



Profile

Standard Profile - 4¼" 22Ga 1 Piece Rollformed Frame
Dynamic for Installation in Systems Where Fans Remain Running
During Fire and Smoke Control

Material

Galvanized Steel - Standard
Stainless Steel - Optional

Orientation

Available for Vertical or Horizontal Installations
Type C Available with Round, Oval, or Rectangular Collars

UL Classification

UL Classified UL 555 - 3 Hour Rating, Dynamic for Use in
Installations Rated 3 Hours or Greater

Fusible Link

165° Rated Link - Standard
212° Rated Link - Optional

22Ga Optional Sleeves

12" Sleeve - Standard
8", 17", 20", or 24" Lengths - Optional

Type A



Blades

Blades in Air-Stream

Vertical Sizes

4" x 4" to 36" x 36"

Horizontal Sizes

4" x 4" to 24" x 24"

Airflow Pressure Ratings

Vertical: 36" x 36" = 2,000 FPM at 4" W.G.
Horizontal: 24" x 24" = 2,000 FPM at 4" W.G.
Horizontal: 12" x 12" = 3,000 FPM at 4" W.G.

Type B



Blades

Blades Out of Air-Stream

Vertical Sizes

4" x 4" to 36" x 32"

Horizontal Sizes

4" x 4" to 24" x 21"

Airflow Pressure Ratings

Vertical: 24" x 20" = 2,000 FPM at 4" W.G.
Horizontal: 24" x 20" = 3,000 FPM at 4" W.G.
Horizontal: 12" x 9" = 3,000 FPM at 4" W.G.

Type C



Blades

Blades and Frame Out of Air-Stream 100% Free Area

Vertical Sizes

4" to 31"
Oval and Rectangular
6" x 6" to 34" x 31"

Horizontal Sizes

4" to 20"
Oval and Rectangular
6" x 6" to 22" x 20"

Series 61

Dynamic Thinline Fire Dampers - 1½ Hour Rated



Profile

Thinline Profile - 2" 22Ga 1 Piece Rollformed Frame
Dynamic for Installation in Systems Where Fans Remain Running
During Fire and Smoke Control

Material

Galvanized Steel - Standard
Stainless Steel - Optional

Orientation

Available for Vertical or Horizontal Installations

UL Classification

UL Classified UL 555 - 1½ Hour Rating, Dynamic for Use in
Installations Rated Less Than 3 Hours

Fusible Link

165° Rated Link - Standard
212° Rated Link - Optional

22Ga Optional Sleeves

12" Sleeve - Standard
8", 17", 20", or 24" Lengths - Optional

Type A



Blades

Blades in Air-Stream

Vertical Sizes

4" x 4" to 24" x 24"

Horizontal Sizes

4" x 4" to 12" x 12"

Airflow Pressure Ratings

Vertical: 24" x 24" = 2,000 FPM at 4" W.G.
Vertical: 12" x 12" = 3,000 FPM at 4" W.G.
Horizontal: 12" x 12" = 3,000 FPM at 4" W.G.

Type B



Blades

Blades Out of Air-Stream

Vertical Sizes

4" x 4" to 24" x 20"

Horizontal Sizes

4" x 4" to 4" x 9"

Airflow Pressure Ratings

Vertical: 24" x 20" = 2,000 FPM at 4" W.G.
Vertical: 12" x 9" = 3,000 FPM at 4" W.G.
Horizontal: 12" x 9" = 3,000 FPM at 4" W.G.

Product Survey

Ceiling Radiation Dampers

Information required for Ceiling Radiation Dampers

1. The dimensions of the duct opening are:
 - Rectangular
 - Round
2. It would be preferable to have the fusible link mounted:
 - Between the blades - SL
 - On the sides of the blades - EA
(between a wire hook & catch)
3. What are the dimensions of the duct? W _____ X H _____
Always indicate the width first even if it is shorter than the height. The width dimension of a CRD will dictate the length of the blade and hinge.
4. What temperature fusible link is required?
 - 165°
 - 212°
5. Are there any requirements for a product manufactured in stainless steel?
 - Yes
 - No
6. Are these products being installed in a UL Classified wood truss floor/ceiling or roof/ceiling assembly?
 - Yes
 - No

*Do you know the UL Classified number? This number will be specified by the architect.
Ex. Aire Technologies L-587*
7. For UL 263, what is the floor-ceiling and/or roof-ceiling design number? _____
8. Does it need to be factory insulated?
 - Yes
 - No

If no, please choose one of the following¹:

 - Series 50 with L Boot²
 - Series 50 with Straight Boot²
 - Series 50 with End Boot²
 - Series 50 with Metal Box (Model 50EAX)

If yes, please choose one of the following:

 - Series 57 – grille outlet
 - Series 58 – grille outlet or duct drop

If Series 58 is chosen, would you like the ductboard factory supplied or field supplied?

 - Factory
 - Field

¹. For applications requiring increased airflow/efficiency a single blade "free-flow" CRD is available. CONSULT FACTORY FOR DETAILS ABOUT Series 51 CRD's INSTALLED IN BOOTS

². Optional 8" throat available upon request.

Series 51

Ceiling Radiation Dampers

Profile

22Ga 1 Piece Rollformed Frame and Blades

Material

Galvanized Steel



UL Classification

UL Classified UL 555C - For Use in Installations Rated Less Than 3 Hours

Fusible Link

165° Rated Link - Standard
212° Rated Link - Optional

Fusible Link Type

Standard Link Attachment (SL) - Standard
Easy Access Attachment (EA) - Optional

Series 51SB



Vertical Sizes

6" x 4" to 24" x 12"

Series 51SB In Boot



True
russ
UL 263 1 Hour

Sizes

6" x 4" x 4"Ø to 14" x 12" x 10"Ø

Enclosure Types

Flanged or Non-Flanged
90° Boot

UL Design

UL 263 Approved for Use in
L-587*, L528, L558, L562, L563 L574, and L585 Floor/Ceiling
P-556*, P533, P544, P545, and P547 Roof/Ceiling

*ATI Exclusive Listings

Series 50

Ceiling Radiation Dampers

Profile

22Ga 1 Piece Rollformed Frame and Blades

Material

Galvanized Steel



UL Classification

UL Classified UL 555C - For Use in Installations Rated Less Than 3 Hours

Fusible Link

165° Rated Link - Standard
212° Rated Link - Optional

Fusible Link Type

Standard Link Attachment (SL) - Standard
Easy Access Attachment (EA) - Optional

Series 50



Sizes

Available in Single-Section Sizes From
4" x 6" or 6" x 4" to 24" x 24"

Insulation

Ceramic Thermal Blanket Provide on Units with Area Greater Than 84
Square Inches

Series 50 With Boot



**True
russ**
UL 263 1 Hour

Sizes

4" x 6" x 4"0 to 14" x 14" x 10"0

Enclosure Types

Flanged or Non-Flanged
90° Boot
Straight Boot
End Boot

UL Design

UL 263 Approved for Use in
L-587*, L528, L558, L562, L563 L574, and L585 Floor/Ceiling
P-556*, P533, P544, P545, and P547 Roof/Ceiling

Series 50 With Box



**True
russ**
UL 263 1 Hour

Sizes

4" x 8" to 14" x 14"

Enclosure Types

Flanged or Non-Flanged
Box

UL Design

UL 263 Approved for Use in
L-587*, L-528, and L-562 Floor/Ceiling
P-556* and P-533 Roof/Ceiling

*ATI Exclusive Listings

Series 55

Ceiling Radiation Dampers

Profile

22Ga 1 Piece Rollformed Frame and Blades

Material

Galvanized Steel



UL Classification

UL Classified UL 555C - For Use in Installations Rated Less Than 3 Hours

Fusible Link

165° Rated Link - Standard
212° Rated Link - Optional

Fusible Link Type

Standard Link Attachment (SL) - Standard
Easy Access Attachment (EA) - Optional

Series 55SL



Sizes

Available in Single-Section Sizes From
4"Ø to 24"Ø

Insulation

Ceramic Thermal Blanket Provide on Units with Area Greater Than 84
Square Inches

Series 55EA



Sizes

Available in Single-Section Sizes From
5"Ø to 24"Ø

Insulation

Ceramic Thermal Blanket Provide on Units with Area Greater Than 84
Square Inches

Series 57

Ceiling Radiation Damper

Profile

22Ga 1 Piece Rollformed Frame and Blades

Material

Galvanized Steel



UL Classification

UL Classified UL 263 - For Use in Wood Truss Floor/Ceiling Assemblies Rated 1 Hour or Less

Fusible Link

165° Rated Link - Standard
212° Rated Link - Optional

Fusible Link Type

Standard Link Attachment (SL)
Available on 4" Diameter
Easy Access Attachment (EA)
Available on 5" Diameter and Up

Series 57IB



Sizes

Available in a Range of Sizes From
4" x 8" x 4"0 to 16" x 16" x 12"0

Enclosure Types

28Ga Box and Collar Available with 1½" R-6 or 2" R-8 Duct Liner Insulation

Insulation

Ceramic Thermal Blanket Provide on Units with Area Greater Than 84 Square Inches

UL Design

UL 263 Approved for Use in
L-587*, L528, L558, L562, L574, and L585 Floor/Ceiling
P-556*, P533, P545, and P547 Roof/Ceiling

Exclusive Feature

Approval for Class 0 and 1 Flex-Duct OR Steel Pipe Elbow Connections to Achieve Top-Out or Side-Out Configurations

* ATI Exclusive Listings

Series 58

Ceiling Radiation Dampers For Duct Opening



Profile

22Ga 1 Piece Rollformed Frame and Blades

Material

Galvanized Steel

UL Classification

UL Classified UL 263 - For Use in Wood Truss Floor/Ceiling Assemblies Rated 1 Hour or Less

Fusible Link

165° Rated Link - Standard
212° Rated Link - Optional

Series 58DD



Sizes

Available in a Range of Sizes From
4" x 8" x 14"h to 20" x 16" x 16"h

Enclosure Types

Incorporates Series 50 UL 555C Evaluated Ceiling Damper
1½" R-6 and R-8 Ductboard Box - **Factory Installed Included**

Insulation

Ceramic Thermal Blanket Provide on Units with Area Greater Than 84
Square Inches

UL Design

UL 263 Approved for Use in
L-587*, L528, L558, L562, L574, and L585 Floor/Ceiling
P-556*, P533, P545, P547, and P580 Roof/Ceiling

Series 58EAD/SD



Sizes

Available in a Range of Sizes From
4" x 8" x 14"h to 20" x 16" x 16"h

Enclosure Types

Incorporates Series 50 UL 555C Evaluated Ceiling Damper
1½" R-6 and R-8 Ductboard Box (**EAD**) or 26Ga Steel Plenum (**SD**) - **Field Installed Not Included**

Insulation

Ceramic Thermal Blanket Provide on Units with Area Greater Than 84
Square Inches

UL Design

UL 263 Approved for Use in
L-587*, L528, L558, L562, L574, and L585 Floor/Ceiling
P-556*, P533, P545, P547, and P580 Roof/Ceiling

*ATI Exclusive Listings

Series 58

Ceiling Radiation Dampers For Register Connections



Profile

22Ga 1 Piece Rollformed Frame and Blades

Material

Galvanized Steel

UL Classification

UL Classified UL 263 - For Use in Wood Truss Floor/Ceiling Assemblies Rated 1 Hour or Less

Fusible Link

165° Rated Link - Standard
212° Rated Link - Optional

Series 58DR



Sizes

Available in a Range of Sizes From
4" x 8" x 14"h to 20" x 16" x 16"h

Enclosure Types

Incorporates Series 50 UL 555C Evaluated Ceiling Damper
1½" R-6 and R-8 Ductboard Box - **Factory Installed Included**

Insulation

Ceramic Thermal Blanket Provide on Units with Area Greater Than 84
Square Inches

UL Design

UL 263 Approved for Use in
L-587*, L528, L558, L562, L574, and L585 Floor/Ceiling
P-556*, P533, P545, P547, and P580 Roof/Ceiling

Series 58EAR/SR



Sizes

Available in a Range of Sizes From
4" x 8" x 14"h to 20" x 16" x 16"h

Enclosure Types

Incorporates Series 50 UL 555C Evaluated Ceiling Damper
1½" R-6 and R-8 Ductboard Box (**EAR**) or 26Ga Steel Plenum (**SR**) - **Field Installed Not Included**

Insulation

Ceramic Thermal Blanket Provide on Units with Area Greater Than 84
Square Inches

UL Design

UL 263 Approved for Use in
L-587*, L528, L558, L562, L574, and L585 Floor/Ceiling
P-556*, P533, P545, P547, and P580 Roof/Ceiling

*ATI Exclusive Listings

Series 58

Ceiling Radiation Dampers For Round Inlet



Profile

22Ga 1 Piece Rollformed Frame and Blades

Material

Galvanized Steel

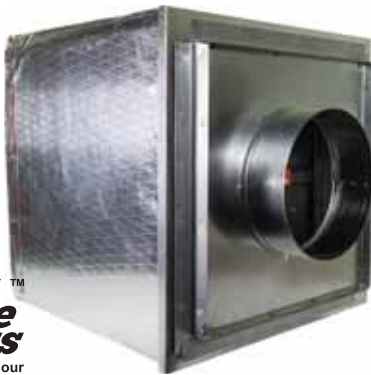
UL Classification

UL Classified UL 263 - For Use in Wood Truss Floor/Ceiling Assemblies Rated 1 Hour or Less

Fusible Link

165° Rated Link - Standard
212° Rated Link - Optional

Series 58DC



Sizes

Available in a Range of Sizes From
6" Diameter to 14" Diameter

Enclosure Types

Incorporates Series 50 UL 555C Evaluated Ceiling Damper
1½" R-6 and R-8 Ductboard Box - **Factory Installed Included**

Insulation

Ceramic Thermal Blanket Provide on Units with Area Greater Than 84
Square Inches

UL Design

UL 263 Approved for Use in
L-587*, L528, L558, L562, L574, and L585 Floor/Ceiling
P-556*, P533, P545, P547, and P580 Roof/Ceiling

Series 58EAC/SC



Sizes

Available in a Range of Sizes From
6" Diameter to 14" Diameter

Enclosure Types

Incorporates Series 50 UL 555C Evaluated Ceiling Damper
1½" R-6 and R-8 Ductboard Box (**EAC**) or 26Ga Steel Plenum (**SC**) - **Field Installed Not Included**

Insulation

Ceramic Thermal Blanket Provide on Units with Area Greater Than 84
Square Inches

UL Design

UL 263 Approved for Use in
L-587*, L528, L558, L562, L574, and L585 Floor/Ceiling
P-556*, P533, P545, P547, and P580 Roof/Ceiling

Product Survey

Combination Fire And Smoke Dampers

Information required for Combination Fire & Smoke dampers:

1. What leakage class is required?
 - Class I Ultra-Low Leakage
 - Class II Low Leakage
2. What is the rating of the partition?
 - 1½ Hours
 - 3 Hours
 - 1 Hour Corridor Ceiling
3. What temperature rating do you require?
 - 250°F
 - 350°F
4. What are the duct dimensions? W_____ X H_____
Always indicate the width first even if shorter than the height. The width dimension will dictate the length of the blades.
5. Does the damper require a transition?
 - Round
 - Oval
 - Rectangular
 - None
6. What voltage actuator is required?
 - 24 Volt
 - 120 Volt
7. Where is the actuator to be mounted?
 - External (Outside damper; out of the airstream)
 - Internal (Inside damper; in the airstream)
 - Grille access required
8. Do you require an end switch?
 - Yes
 - No
9. What sleeve length is required?
 - 17"
 - 20"
 - 24"
10. At what temperature does the damper need to close?
 - 165°F
 - 212°F
11. Is a specific actuator brand required?
 - Yes, Siemens
 - Yes, Belimo
 - No

Combination

Fire Smoke And Corridor Dampers



Leakage Classes

Class 1 - Ultra-Low
Class 2 - Low

Material

Galvanized Steel

Orientation

Series 10 and 30 Available for Vertical or Horizontal Installations
Series 40 Available for Horizontal Installation Only

UL Classification And Standards

UL Classified UL 555 and 555S
NFPA Standard 90A ICC Building Codes

Temperature Ratings

250° Rated - Standard
350° Rated - Optional

Thermal Disk Ratings

165° - Standard
212° - Optional

22Ga Optional Sleeves

17" Sleeve - Standard
20" or 24" Lengths - Optional

Series 10

Fire & Smoke Damper



UL Rating

UL 555 and 555S - 1½ Hour Rating, for Use in Installations Rated Less Than 3 Hours

Sizes

Available in Single-Section Sizes up to 36" x 48"

Blades

16Ga Galvanized 3 "V" Formed for Rigidity
Opposed Operation
Double Yoke Kneelock for Increased Stability

Airflow Pressure Ratings

Vertical and Horizontal = 2,000 FPM at 4" W.G. Maximum

Options

Transitions: Rectangle, Round, Oval, or Special
Actuator Type: Electrical
Actuator Location: External or Internal

Series 30

Fire & Smoke Damper



UL Rating

UL 555 and 555S - 3 Hour Rating, for Use in Installations Rated 3 Hours or Greater

Sizes

Available in Single-Section Sizes up to 36" x 36"

Blades

16Ga Galvanized 3 "V" Formed for Rigidity
Opposed Operation
Double Yoke Kneelock for Increased Stability

Airflow Pressure Ratings

Vertical and Horizontal = 2,000 FPM at 4" W.G. Maximum

Options

Transitions: Rectangle, Round, Oval, or Special
Actuator Type: Electrical
Actuator Location: External or Internal

Series 40

Corridor Damper



UL Rating

UL 555 and 555S - 1 Hour Rating, for use Where Air Ducts Penetrate or Terminate at Openings in the Ceilings of Interior Corridors

Sizes

Available in Single-Section Sizes up to 24" x 24"

Blades

16Ga Galvanized 3 "V" Formed for Rigidity
Opposed Operation
Double Yoke Kneelock for Increased Stability

Airflow Pressure Ratings

Vertical and Horizontal = 2,000 FPM at 4" W.G. Maximum

Options

Transitions: Rectangle, Round, Oval, or Special
Actuator Type: Electrical
Actuator Location: External or Internal

Product Survey

Smoke Dampers

Information required for Smoke dampers:

1. What leakage class is required?
 - Class I Ultra-Low Leakage
 - Class II Low Leakage
2. What temperature rating do you require?
 - 250°F
 - 350°F
3. What are the dimensions of the damper? W_____ X H_____
Always indicate the width first even if shorter than the height. The width dimension will dictate the length of the blades.
4. Does the damper require a transition?
 - Round
 - Oval
 - Rectangular
 - None
5. What voltage actuator is required?
 - 24 Volt
 - 120 Volt
6. Where is the actuator to be mounted?
 - External (Outside damper; out of the airstream)
 - Internal (Inside damper; in the airstream)
7. Do you require an end switch?
 - Yes
 - No

Series 20

Smoke Damper

Leakage Classes

Class 1 - Ultra-Low
Class 2 - Low

Material

Galvanized Steel

Orientation

Available for Vertical or Horizontal Installations



UL Classification And Standards

UL Classified UL 555S
NFPA Standard 90A ICC Building Codes

Temperature Ratings

250° Rated - Standard
350° Rated - Optional

22Ga Optional Sleeves

17" Sleeve - Standard
20" or 24" Lengths - Optional

Series 20



UL Rating

UL 555S - Standard for Smoke Dampers

Sizes

Available in Single-Section Sizes up to 36" x 48"
Available in Multi-Section Sizes up to 288" x 36"
Class 1: 108" x 48"
Class 2: 144" x 48"

Airflow Pressure Ratings

Vertical and Horizontal = 2,000 FPM at 4" W.G. Maximum

Product Survey

Air Control Dampers

Information required for Air Control Dampers

1. Do you require a ultra low leakage damper?
 - Yes
 - No
2. What are the dimensions of the damper? W_____ X H_____
Always indicate the width first even if shorter than the height. The width dimension will dictate the length of the blades.
3. Bearing material?
 - Non-metallic Celcon® (Standard)
 - Bronze
4. What size shaft extension is required?
 - 3"
 - 6"
 - 11"
5. What voltage actuator is required?
 - None, Manual
 - 24v
 - 120v
 - 240v
6. Do you require an End Switch?
 - Yes
 - No
7. 2 position or Modulating Actuator?
 - 2 Position
 - Modulating

Series 80

Air Control Damper

Material

Mill Galvanized Steel

Orientation

Available for Vertical or Horizontal Installations

22Ga Optional Sleeves

12" Sleeve - Standard

8", 17", 20", or 24" Lengths - Optional

Series 80



Frame

16Ga Galvanized Steel 5" x 1" Channel Construction with Die-Formed Corner Gussets

Blades

16Ga Galvanized 3" V" Formed for Rigidity
Opposed Closed Action

Bearings

Sintered Bronze Oil Impregnated or Non-Metallic Celcon® Acetal Plastic

Axles

½" Square Zinc Plated Steel

Linkage

Zinc Plated Steel Concealed in the Channel Frame

Actuator

Shipped Loose and Field Installed*

Sizes

Available in Single-Section Sizes From
8" x 8" to 60" x 60"

Optional Components

Extended Shafts - 3" (Series 80), 6" (Series 81), or 11" (Series 82)

** Consult Aire Technologies for Factory Installed Actuator*

Accessories

Retaining Angle



Description

Retaining angles are 16 gauge, 1½" x 1½" galvanized steel, and are supplied in cut-to-length sets for each damper size.

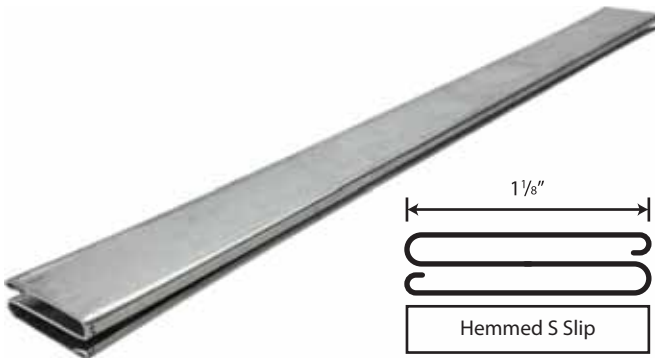
Number of Pieces

Double Sided Retaining Angle - 8 Pieces Cut to Length
Single Sided Retaining Angle - 4 Pieces Cut to Length

Standards

Meets ASHRAE, UMC, and SMACNA E Class Rigidity (May Be Used For Duct Reinforcement)

Hemmed S



Description

For use in Series 50 w/boot, Series 50 w/box, Series 51 w/boot, Series 57, and Series 58 installations. Please reference installation instructions or videos for more information.

Standard Lengths

28 Ga 26"
28 Ga 120"

Sleeves



Standard Length

22 Ga 12"

Optional Lengths

22 Ga 4"
22 Ga 8"
22 Ga 17"
22 Ga 20"
22 Ga 24"

Accessories

Thermal Blankets



Description

Ceramic Fiber Thermal Blanket (commonly used on CRD's of area greater than 84 SI) is available in 24"x24" and 28"x28" pieces, with or without fiber mesh scrim.

Fusible Links



Description

Fusible Links are supplied in long, short, or no hook according to the respective damper application and are available in 165°F (100°F ambient) and 212°F (150°F ambient) temperatures in packages of 10 pieces or cartons of 100 pieces.

Type A Dampers

Short Hook

Type B Dampers

Long Hook

Type C Dampers

Short Hook

Ceiling Radiation Dampers

No Hook

Special Characteristics

- Maximum Load = 10 lbs. (4.5 kg.)
- Minimum Load = 3 lbs. (1.36 kg.)
- Corrosion Resistant Construction
- Brass Components
- Solid Eye-to-Eye Connection



Access Doors

High Pressure Sandwich® And Low Pressure Square Framed

Sandwich



Door Styles

Rectangular
Hi-Temp
Clean-Out
Circular Clean-Out
Round Duct
Observation

Special Characteristics

- Advanced Pressure Vessel Design
- Insulated, Uninsulated, and Specialty Metals
- No Measuring (Self-Adhesive Template Provided)
- Effortless Opening and Closing (No Tools Required)
- Shape Provides a More Effective Access Area
- No Frame to Install

Square Frame



Door Styles

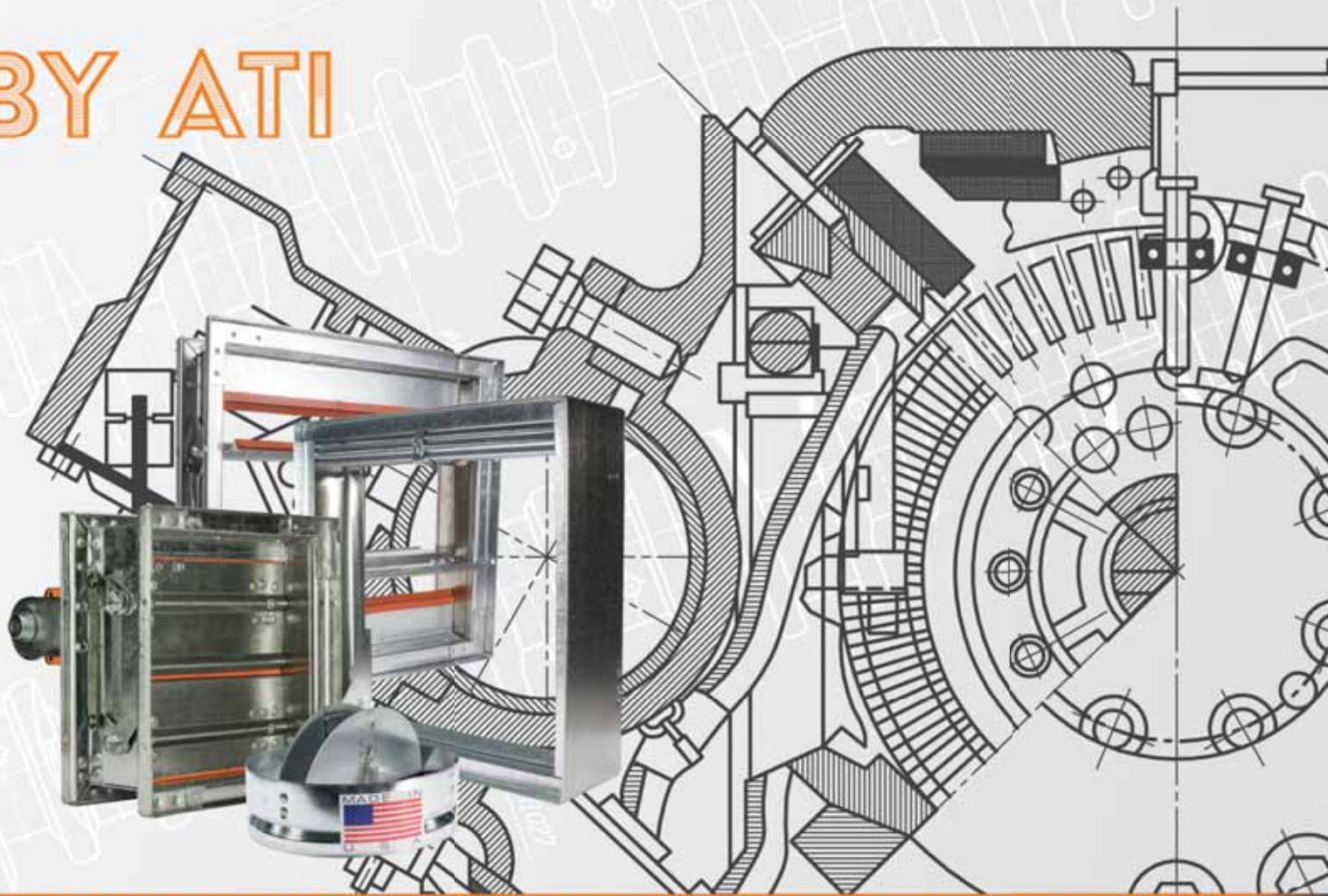
Hinge and Cam
Cam Latches
High Pressure

Special Characteristics

- Double gasketed
- Insulated
- Competitively priced
- Precision designed and manufactured
- Variety of sizes available
- Available in Specialty Metals

DESIGNED ENGINEERED & BUILT

BY ATI



Fire Dampers | Leakage Rated Dampers | CRDs | True Truss™ Enclosures

At Aire Technologies we know you take pride in the work you do. That is why we take pride in providing the highest quality products and service in the HVAC Industry. All our fire life safety devices are designed and engineered to exceed industry standards for performance and come backed by our unsurpassed level of technical support. We deliver the right product for the right design application right on time, every time.

Aire Technologies, your source for engineered HVAC fire life safety solutions.



AireTechnologies, Inc
AIR COMPANY

AireTechnologies.com

210 5th Street, Charleroi PA, 15022

P: 1.866.421.AIRE | F: 724.310.1262